

Recombinant Human HUWE1 protein(4005-4374aa), His&Myc-tagged

Cat. No. HUWE1-4016H Lot. No. (See product label)

SPECIFICATION

Product Overview	Recombinant Human HUWE1 protein(Q7Z6Z7)(4005-4374aa), fused with N-terminal His tag and C-terminal Myc tag, was expressed in E.coli.
Species	Human
Source	E.coli
ProteinLength	4005-4374aa
Form	If the delivery form is liquid, the default storage buffer is Tris/PBS-based buffer, 5%-50% glycerol. If the delivery form is lyophilized powder, the buffer before lyophilization is Tris/PBS-based buffer, 6% Trehalose, pH 8.0.
Molecular Mass	50.7 kDa
Purity	Greater than 90% as determined by SDS-PAGE.
Storage	Store at -20°C/-80°C upon receipt, aliquoting is necessary for multiple use. Avoid repeated freeze-thaw cycles.
Reconstitution	We recommend that this vial be briefly centrifuged prior to opening to bring the contents to the bottom. Please reconstitute protein in deionized sterile water to a concentration of 0.1-1.0 mg/mL. We recommend to add 5-50% of glycerol (final concentration) and aliquot for long-term storage at -20°C/-80°C.

 Tel: 1-631-559-9269 1-516-512-3133

 Email: info@creative-biomart.com  Fax: 1-631-938-8127

 45-1 Ramsey Road, Shirley, NY 11967, USA

AA Sequence

LERLDEGLRKEDMAVHVRDRDHFEDSYRELHRKSPEEMKNRLYIVFEGEEGQDAG
 GLLREWYMIISREMFNPMYALFRTSPGDRVTTYTINSSHCNPNHLSYFKFVGRIVAK
 AVYDNRLLCEYFTRSFYKHILGKSVRYTDMESDYHFYQGLVYLLENDVSTLGYDLT
 FSTEVQEFQVCEVRDLKPNGANILVTEENKKEYVHLVCQMRMTGAIRKQLAAFLEGF
 YEIIPKRLISIFTEQELELLISGLPTIDIDLKSNTEYHKYQNSIQWFWRALRSFDQA
 DRAKFLQFVTGTSKVPLQGFAALEGMNGIQKFQIHRDDRSTDRLPSAHTCFNQLDLP
 AYESFEKLRHMLLLAIQECSEGFGLA

GENE INFORMATION

Gene Name	HUWE1 HECT, UBA and WWE domain containing 1, E3 ubiquitin protein ligase [Homo sapiens]
Official Symbol	HUWE1
Synonyms	HUWE1; HECT, UBA and WWE domain containing 1, E3 ubiquitin protein ligase; HECT, UBA and WWE domain containing 1; E3 ubiquitin-protein ligase HUWE1; I6772; KIAA0312; UREB1; ARF-binding protein 1; URE-binding protein 1; BJ-HCC-24 tumor antigen; large structure of UREB1; HECT domain protein LASU1; Mcl-1 ubiquitin ligase E3; upstream regulatory element-binding protein 1; homologous to E6AP carboxyl terminus homologous protein 9; MULE; LASU1; HECTH9; URE-B1; ARF-BP1; HSPC272;
Gene ID	10075
mRNA Refseq	NM_031407
Protein Refseq	NP_113584
MIM	300697

 Tel: 1-631-559-9269 1-516-512-3133

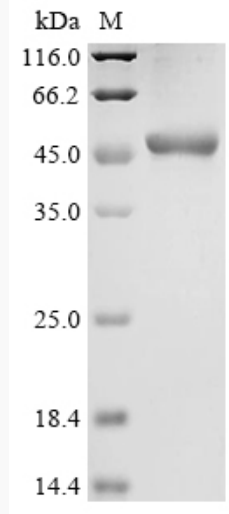
 Email: info@creative-biomart.com  Fax: 1-631-938-8127

 45-1 Ramsey Road, Shirley, NY 11967, USA

UniProt ID

Q7Z6Z7

SDS-PAGE



 Tel: 1-631-559-9269 1-516-512-3133

 Email: info@creative-biomart.com  Fax: 1-631-938-8127

 45-1 Ramsey Road, Shirley, NY 11967, USA