

Active Recombinant Mouse Hc protein, His&hFc-tagged

Cat. No. Hc-3716M Lot. No. (See product label)

SPECIFICATION

Product Overview	Active Recombinant Mouse Hc protein(P06684)(679~755 aa), fused with N-terminal His tag and C-terminal hFc tag, was expressed in HEK293.
Species	Mouse
Source	HEK293
ProteinLength	679-755 aa
Form	Lyophilized from sterile PBS, pH7.4, containing 0.01% SKL, 1mM DTT, 5% Trehalose and Proclin300.
Bio-activity	Complement Component 5a (C5a) is a component of the complement system which plays a key role in promoting migration and adherence of neutrophils and monocytes to vessel walls. The activity of recombinant human C5a was also measured by its ability to induce N-acetyl-β-D-glucosaminidase release from differentiated U937 human histiocytic lymphoma cells. 3.2*10 ⁶ differentiated U937 cells were added to the 24-well plate and different concentrations of rhC5a was added to the 24-well plate and incubated at 37°C for 3min. The cells were centrifuged at 400 g for 3min, and the supernatant contained N-acetyl-β-D-glucosaminidase. The enzyme activity of N-acetyl-β-D-glucosaminidase was measured by the substrate of 4-Nitrophenyl 2-acetamido-2-deoxy-β-D-glucopyranoside. It was obvious that rhC5a can significantly induce N-acetyl-β-D-glucosaminidase release.

 Tel: 1-631-559-9269 1-516-512-3133

 Email: info@creative-biomart.com  Fax: 1-631-938-8127

 45-1 Ramsey Road, Shirley, NY 11967, USA

Molecular Mass	39.9kDa
Endotoxin	<1.0EU per 1µg (determined by the LAL method).
Purity	> 90% as determined by SDS-PAGE.
Storage	Avoid repeated freeze/thaw cycles. Store at -20°C for 12 months. Aliquot and store at -80°C for 12 months.
Reconstitution	Reconstitute in 10mM PBS (pH7.4) to a concentration of 0.1-1.0 mg/mL. Do not vortex.

GENE INFORMATION

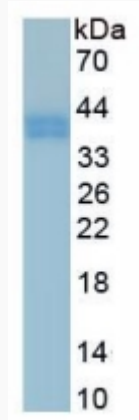
Gene Name	Hc hemolytic complement [<i>Mus musculus</i>]
Official Symbol	Hc
Synonyms	HC; hemolytic complement; complement C5; C5; He; C5a;
Gene ID	15139
mRNA Refseq	NM_010406
Protein Refseq	NP_034536

 Tel: 1-631-559-9269 1-516-512-3133

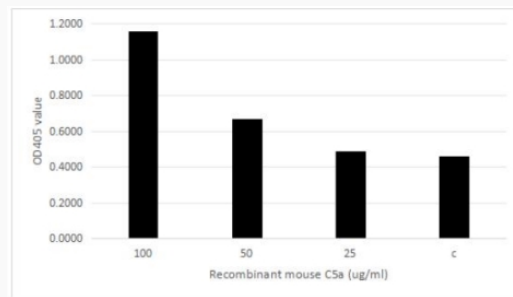
 Email: info@creative-biomart.com  Fax: 1-631-938-8127

 45-1 Ramsey Road, Shirley, NY 11967, USA

SDS-PAGE



Activity



 Tel: 1-631-559-9269 1-516-512-3133

 Email: info@creative-biomart.com  Fax: 1-631-938-8127

 45-1 Ramsey Road, Shirley, NY 11967, USA