

Adult Mouse Heart Whole Cell Lysate

Cat. No. Heart-071MCL Lot. No. (See product label)

SPECIFICATION

Product Overview	Ready-to-use whole cell lysates are derived from cell lines or tissues using highly refined extraction protocols to ensure exceptionally high quality, protein integrity and lot-to-lot reproducibility. All extracts are tested by SDS-PAGE using 4-20% gradient gels and immunoblot analysis using antibodies to key cell signaling components to confirm the presence of both high molecular weight and low molecular weight proteins.
Species	Mouse
Form	Liquid (sterile filtered)
Specificity	Tissues were washed exhaustively with PBS to remove blood and other debris. A lysate was prepared by homogenizing the tissue and washing the cells in cold PBS. Washed cells were incubated at 4 centigrade in modified RIPA buffer to lyse the cells. Protein integrity is ensured using a cocktail of protease inhibitors with broad specificity for the inhibition of aspartic, cysteine, and serine proteases as well as aminopeptidases (0.1 mM AEBSF HCl, 0.08 μ M Aprotinin, 5 μ M Bestatin, 1.5 μ M E-64, 2 μ M Leupeptin Hemisulfate and 1 μ M Pepstatin A). The following phosphatase inhibitors were also added: 1 mM NaF and 1 mM Na ₃ VO ₄ . Cell debris was removed by centrifugation and membrane filtration. Protein concentration was determined by Lowry assay using a commercially available kit. The protein concentration was adjusted to 4 mg/mL and then an equal volume of 2 \times SDS-PAGE sample buffer was added to a final protein concentration of 2 mg/mL.

 Tel: 1-631-559-9269 1-516-512-3133

 Email: info@creative-biomart.com  Fax: 1-631-938-8127

 45-1 Ramsey Road, Shirley, NY 11967, USA

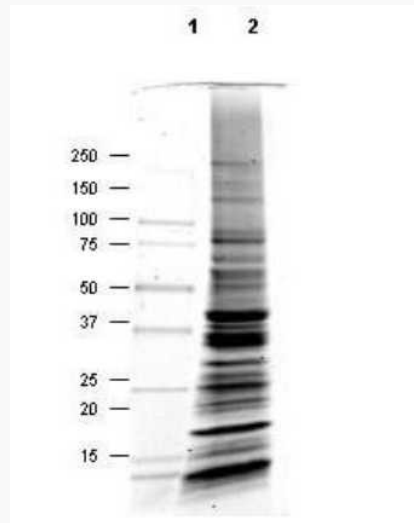


Applications	SDS-PAGE
Cell Line	Primary tissue
Lysate Fractionation	Whole Cell Lysate
Lysate Stimulation	Not Stimulated
Culture Type	Primary Tissue
Induction	None (Control)
Concentration	2.0 mg/mL by BCA assay
Buffer	1x SDS-PAGE Sample Buffer (62.5 mM Tris HCl, 2% SDS, 10% Glycerol and 0.005% bromophenol blue, pH 6.8)
Preservative	None
Stabilizer	10% (v/v) Glycerol
Shipping	Dry Ice
Storage	Store vial at -70 centigrade or COLDER. For extended storage, aliquot contents to minimize freeze/thaw cycles.
Expiration	Expiration date is three months from date of receipt.

 Tel: 1-631-559-9269 1-516-512-3133

 Email: info@creative-biomart.com  Fax: 1-631-938-8127

 45-1 Ramsey Road, Shirley, NY 11967, USA

SDS-PAGE

Coomassie stained SDS-PAGE of 30 μ g of Normal Mouse Heart Whole Cell Lysate resolved using a 4-20% gradient gel under reducing conditions (lane 2). Molecular weight standards are shown in lane 1.

 Tel: 1-631-559-9269 1-516-512-3133

 Email: info@creative-biomart.com  Fax: 1-631-938-8127

 45-1 Ramsey Road, Shirley, NY 11967, USA