

Native Shrimp hemocyanin Protein, a substitute for KLH, animal free

Cat. No. Hemocyanin-30S **Lot. No.** (See product label)

SPECIFICATION

Product Overview	<p>Native animal free shrimp hemocyanin protein is a substitute for KLH.</p> <p>Highly immunogenic: SHC owns the comparable immunogenicity to KLH</p> <p>High-yield conjugation: Conjugation efficiency higher than KLH</p> <p>Excellent solubility: SHC is more soluble than KLH, and is compatible with poorly soluble haptens</p> <p>Excellent performance: Verified through hundreds of antibody generation test</p>
Species	Penaeus vannamei
Source	Penaeus vannamei
Description	<p>Shrimp hemocyanin (SHC), a highly soluble hemocyanin from the Penaeus vannamei (<i>P. vannamei</i>), is used as a substitute for KLH. Similar to KLH, SHC serves as a carrier protein for conjugation of hapten (including peptides, nucleic acids, drugs, or toxins). The conjugates would make these haptens highly immunogenic. The immunogenicity of SHC is comparable to KLH. However, the solubility is significantly higher, especially after hapten conjugation. Thus, SHC is advantageous for antibody or vaccine generation.</p>
Molecular Mass	75 kDa
Purity	≥ 98% (SDS-PAGE and SEC)
Storage	Store it at -20 centigrade for 12 months. It is recommended that the protein be

 Tel: 1-631-559-9269 1-516-512-3133

 Email: info@creative-biomart.com  Fax: 1-631-938-8127

 45-1 Ramsey Road, Shirley, NY 11967, USA

aliquoted for optimal storage. Avoid repeated freeze-thaw cycles.

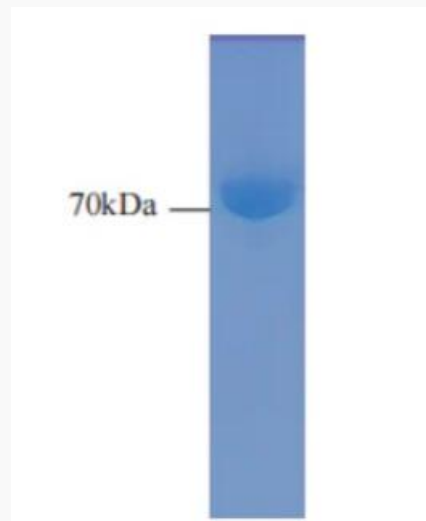
Storage Buffer Lyophilized with no additives

GENE INFORMATION

Official Symbol Hemocyanin

Synonyms Hemocyanin

**SDS-PAGE of
purified hemocyanin**

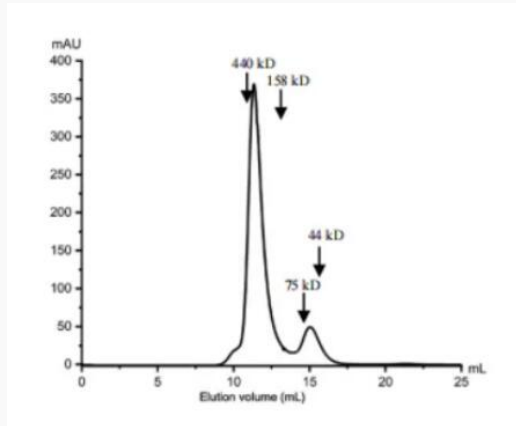


 Tel: 1-631-559-9269 1-516-512-3133

 Email: info@creative-biomart.com  Fax: 1-631-938-8127

 45-1 Ramsey Road, Shirley, NY 11967, USA

**SEC of purified
hemocyanin**



 Tel: 1-631-559-9269 1-516-512-3133

 Email: info@creative-biomart.com  Fax: 1-631-938-8127

 45-1 Ramsey Road, Shirley, NY 11967, USA