

Recombinant Mouse Hepacam Protein, Avi&Flag tagged, Biotinylated

Cat. No. Hepacam-01MFL Lot. No. (See product label)

SPECIFICATION

Product Overview	Biotinylated recombinant Mouse Hepacam Protein with Avi&Flag tag was expressed in HEK293.
Species	Mouse
Source	HEK293
ProteinLength	1-418 aa
Conjugation/Label	Biotin
Description	<p>Predicted to be involved in immune response. Predicted to be located in astrocyte end-foot. Predicted to be active in cell-cell junction. Is expressed in several structures, including alimentary system; heart; nervous system; sensory organ; and skeleton.</p> <p>Used to study megalencephalic leukoencephalopathy with subcortical cysts. Human ortholog(s) of this gene implicated in megalencephalic leukoencephalopathy with subcortical cysts 2A and megalencephalic leukoencephalopathy with subcortical cysts 2B. Orthologous to human HEPACAM (hepatic and glial cell adhesion molecule).</p>
Molecular Mass	49.4 kDa
Endotoxin	<1 EU/μg of the protein by the LAL
Purity	>80% by SDS-PAGE

 Tel: 1-631-559-9269 1-516-512-3133

 Email: info@creative-biomart.com  Fax: 1-631-938-8127

 45-1 Ramsey Road, Shirley, NY 11967, USA

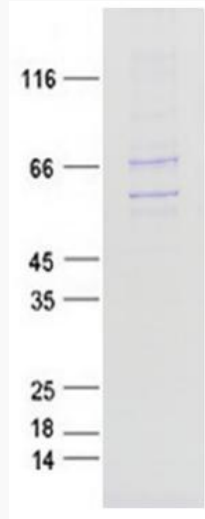
Note	For testing in cell culture applications, please filter before use. Note that you may experience some loss of protein during the filtration process
Storage	Store at -80 centigrade. It is recommended that the protein be aliquoted for optimal storage. Avoid repeated freeze-thaw cycles. Stable for at least 1 year from receipt of products under proper storage and handling conditions
Storage Buffer	25 mM Tris-HCl, 500 mM NaCl, 0.4 mg/mL Triple Flag and 10% glycerol, pH 7.3
Concentration	0.22 mg/mL by Bradford
Conjugation	Biotin
GENE INFORMATION	
Gene Name	Hepacam hepatocyte cell adhesion molecule [Mus musculus (house mouse)]
Official Symbol	Hepacam
Synonyms	Hepacam; hepatocyte cell adhesion molecule; Hepn1; Glialcam; 2900042E01Rik; hepatic and glial cell adhesion molecule; protein hepaCAM
Gene ID	72927
mRNA Refseq	NM_175189
Protein Refseq	NP_780398
UniProt ID	Q640R3

 Tel: 1-631-559-9269 1-516-512-3133

 Email: info@creative-biomart.com  Fax: 1-631-938-8127

 45-1 Ramsey Road, Shirley, NY 11967, USA

SDS-PAGE



 Tel: 1-631-559-9269 1-516-512-3133

 Email: info@creative-biomart.com  Fax: 1-631-938-8127

 45-1 Ramsey Road, Shirley, NY 11967, USA