

# Recombinant Mouse Hfe Full Length Transmembrane protein, His-tagged

**Cat. No.** Hfe-4300M    **Lot. No.** (See product label)

## SPECIFICATION

<b>Product Overview</b>	Recombinant Mouse Hfe protein(P70387)(25-359aa), fused to N-terminal His tag, was expressed in E. coli.
<b>Species</b>	Mouse
<b>Source</b>	E.coli
<b>ProteinLength</b>	25-359aa
<b>Form</b>	If the delivery form is liquid, the default storage buffer is Tris/PBS-based buffer, 5%-50% glycerol. If the delivery form is lyophilized powder, the buffer before lyophilization is Tris/PBS-based buffer, 6% Trehalose, pH 8.0.
<b>Molecular Mass</b>	39.5 kDa
<b>AA Sequence</b>	QALPPRSHSLRYLFMGASEPDLGLPLFEARGYVDDQLFVSYNHESRRAEPRAPWIL EQTSSQLWLHLSQSLKGDYMFIVDFWTIMGNYNHSHKVTCLGVVSESHILQVVLCG EVHEDNSTSGFWRYGYDGGQDHLEFCPKTLNWSAAEPGAWATKVEWDEHKIRAKQ NRDYLEKDCPEQLKRLLLELGRGVLGQQVPTLVKVTRHWASTGTSLRCQALDFFPQN ITMRWLKDNQPLDAKDVNPEKVLPNGDETYQGWLTLAVAPGDETRFTCQVEHPGL DQPLTASWEPLQSQAMIIGISGVTVCAIFLVGILFLILRKRKASGGTMGGYVLTDC
<b>Purity</b>	Greater than 85% as determined by SDS-PAGE.

 Tel: 1-631-559-9269    1-516-512-3133

 Email: [info@creative-biomart.com](mailto:info@creative-biomart.com)     Fax: 1-631-938-8127

 45-1 Ramsey Road, Shirley, NY 11967, USA

<b>Storage</b>	Store at -20°C/-80°C upon receipt, aliquoting is necessary for mutiple use. Avoid repeated freeze-thaw cycles.
<b>Reconstitution</b>	Please reconstitute protein in deionized sterile water to a concentration of 0.1-1.0 mg/mL. We recommend to add 5-50% of glycerol (final concentration) and aliquot for long-term storage at -20°C/-80°C. Our default final concentration of glycerol is 50%.

## GENE INFORMATION

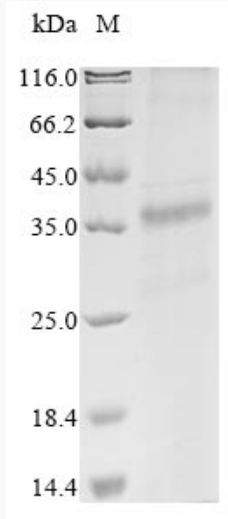
<b>Gene Name</b>	Hfe hemochromatosis [ <i>Mus musculus</i> ]
<b>Official Symbol</b>	Hfe
<b>Synonyms</b>	HFE; hemochromatosis; hereditary hemochromatosis protein homolog; MR2; MGC151121; MGC151123;
<b>Gene ID</b>	15216
<b>mRNA Refseq</b>	NM_010424
<b>Protein Refseq</b>	NP_034554

 Tel: 1-631-559-9269 1-516-512-3133

 Email: [info@creative-biomart.com](mailto:info@creative-biomart.com)  Fax: 1-631-938-8127

 45-1 Ramsey Road, Shirley, NY 11967, USA

**SDS-PAGE**



 Tel: 1-631-559-9269 1-516-512-3133

 Email: [info@creative-biomart.com](mailto:info@creative-biomart.com)  Fax: 1-631-938-8127

 45-1 Ramsey Road, Shirley, NY 11967, USA