

# Active Recombinant Mouse Hepatocyte Growth Factor, His-tagged

**Cat. No.** Hgf-728M    **Lot. No.** (See product label)

## SPECIFICATION

<b>Product Overview</b>	Recombinant Mouse Hgfprotein was expressed in Murine myeloma cell line with a C-terminal 10-Histag. Met1-Ser653. The proform was purified, activated and further purified.
<b>Species</b>	Mouse
<b>Source</b>	Mammalian Cells
<b>ProteinLength</b>	1-653 a.a.
<b>Description</b>	Hgf is a serineendopeptidase that cleaves at the peptide bond between Arg494 and Val495 ofsingle-chain human Hgf precursor, generating the active heterodimer. Hgf isproduced and secreted by the liver and normally circulates in the blood as aninactive zymogen. The zymogen has a weak affinity for heparin but acquires astrong affinity for heparin upon activation that is linked to bloodcoagulation.
<b>Form</b>	Supplied as a 0.2 µmfiltered solution in Tris, NaCl and CaCl <sub>2</sub> .
<b>N-terminalSequence</b>	Val370 & Ile406
<b>Molecular Weight</b>	32 kDa & 28 kDa
<b>Activity</b>	Measuredby its ability to cleave the fluorogenic peptide substrate, Mca-RPKPVE-Nval-WRK(Dnp)-NH <sub>2</sub> . The specific activity is > 100 pmoles/min/µg, as measured

 Tel: 1-631-559-9269    1-516-512-3133

 Email: [info@creative-biomart.com](mailto:info@creative-biomart.com)     Fax: 1-631-938-8127

 45-1 Ramsey Road, Shirley, NY 11967, USA

under the described conditions.

**Endotoxin Level** <1.0 EU per 1 µg of the protein by the LAL method.

**SDS-PAGE** 35 kDa and 32 kDa, reducing conditions.

**Purity** >95%, by SDS-PAGE under reducing conditions and visualized by silver stain.

**Storage** Use a manual defrost freezer and avoid repeated freeze-thaw cycles. 6 months from date of receipt, -70°C as supplied. 3 months, -70°C under sterile conditions after opening.

## GENE INFORMATION

**Gene Name** [Hgf hepatocyte growth factor \[ Mus musculus \]](#)

**Official Symbol** [Hgf](#)

**Synonyms** Hgf; hepatocyte growth factor; NK1; NK2; HGF/SF; SF/HGF; C230052L06Rik; SF; scatter factor; hepatopoeitin-A

**Gene ID** [15234](#)

**mRNA Refseq** [NM\\_010427](#)

**Protein Refseq** [NP\\_034557](#)

**UniProt ID** [Q08048](#)

**Chromosome Location** 5 A2-A3; 5 4.0 cM

 Tel: 1-631-559-9269 1-516-512-3133

 Email: [info@creative-biomart.com](mailto:info@creative-biomart.com)  Fax: 1-631-938-8127

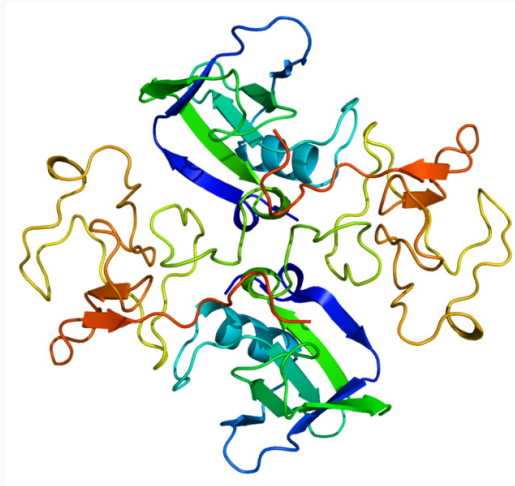
 45-1 Ramsey Road, Shirley, NY 11967, USA

**Pathway**

Cytokine-cytokinereceptor interaction; Focal Adhesion; Focal adhesion; Hemostasis; Malaria;Melanoma; Pathways in cancer; Platelet activation; Platelet degranulation;Renal cell carcinoma; Response to elevated platelet cytosolic Ca<sup>2+</sup>;Signaling of Hepatocyte Growth Factor Receptor

**Function**

catalytic activity;growth factor activity; protein heterodimerization activity; serine-typeendopeptidase activity

**PDBrendering based on 1bht.**

 Tel: 1-631-559-9269 1-516-512-3133

 Email: [info@creative-biomart.com](mailto:info@creative-biomart.com)  Fax: 1-631-938-8127

 45-1 Ramsey Road, Shirley, NY 11967, USA