

Recombinant Rat Hif1a protein, His-tagged

Cat. No. Hif1a-4684R **Lot. No.** (See product label)

SPECIFICATION

Product Overview	Recombinant Rat Hif1a protein(O35800)(380-585 aa), fused with C-terminal His tag, was expressed in Yeast.
Species	Rat
Source	Yeast
ProteinLength	380-585 aa
Form	For liquid formulations, the standard storage buffer consists of a Tris or PBS based solution supplemented with 5-50% glycerol. When provided as lyophilized powder, the product undergoes freeze-drying from a Tris- or PBS-based formulation containing 6% trehalose, adjusted to pH 8.0 prior to the lyophilization process.
Molecular Mass	26.0 kDa
AASequence	SEDTSCLFDKLLKKEPDALTLLAPAAGDTIISLDFGSDDTETEDQQLEDVPLYNDVMFPP SSNEKLNINLAMSPLPASETPKPLRSSADPALNQEVALKLESSPESLGLSFTMPQIQD QPASPSDGSTRQSSPEPNPSEYCFDSDMVNVFKLELVEKLFPAEDTEAKNPFSA QDLDLEMLAPYIPMDDDFQLRSFDQLSPLESN
Purity	Greater than 95% as determined by SDS-PAGE.
Storage	Store at -20°C/-80°C upon receipt, aliquoting is necessary for mutiple use. Avoid repeated freeze-thaw cycles.

 Tel: 1-631-559-9269 1-516-512-3133

 Email: info@creative-biomart.com  Fax: 1-631-938-8127

 45-1 Ramsey Road, Shirley, NY 11967, USA

Reconstitution Please reconstitute protein in deionized sterile water to a concentration of 0.1-1.0 mg/mL. Aliquot for long-term storage at -80°C.

GENE INFORMATION

Gene Name Hif1a hypoxia-inducible factor 1, alpha subunit (basic helix-loop-helix transcription factor) [*Rattus norvegicus*]

Official Symbol Hif1a

Synonyms HIF1A; hypoxia-inducible factor 1, alpha subunit (basic helix-loop-helix transcription factor); hypoxia-inducible factor 1-alpha; HIF1 alpha; HIF1-alpha; HIF-1 alpha; HIF-1-alpha; hypoxia-inducible factor 1 alpha; hypoxia inducible factor 1, alpha subunit; MOP1;

Gene ID 29560

mRNA Refseq NM_024359

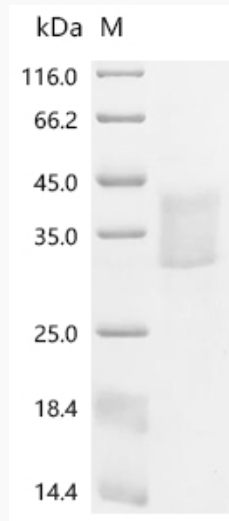
Protein Refseq NP_077335

 Tel: 1-631-559-9269 1-516-512-3133

 Email: info@creative-biomart.com  Fax: 1-631-938-8127

 45-1 Ramsey Road, Shirley, NY 11967, USA

SDS-PAGE



 Tel: 1-631-559-9269 1-516-512-3133

 Email: info@creative-biomart.com  Fax: 1-631-938-8127

 45-1 Ramsey Road, Shirley, NY 11967, USA