

Native Staphylococcus aureus Hla Protein

Cat. No. Hla-730S **Lot. No.** (See product label)

SPECIFICATION

Product Overview	Native Staphylococcus aureus Hla Protein, sodium citrate buffer as balance.
Species	Staphylococcus aureus
Description	α -hemolysin is a pore-forming cytotoxin, which is an extracellular protein secreted by most pathogenic Staphylococcus aureus strains. It is secreted in the form of water-soluble monomer and is a small β barrel protein.
Form	Lyophilized powder
Bio-activity	$\geq 10,000$ units/mg protein
Purity	~ 60 % by Lowry
Applications	1. As a component of electrolyte solution, it is used to test the pore formation in lipid bilayer by electrophysiological measurement; 2. The osteogenic inhibition of BMSCs was tested; 3. Preparation of α hemolysin molecularly imprinted polymer (MIP) for Biacore and surface plasmon resonance. 4. α -hemolysin was used in a study to test the efflux pump and hemolysin activity of Escherichia coli in dairy products. It is also used to test its adaptability to benzalkonium chloride and the effect of ciprofloxacin on biofilm formation.
Storage	2-8 centigrade
Concentration	$\geq 10,000$ units/mg protein

 Tel: 1-631-559-9269 1-516-512-3133

 Email: info@creative-biomart.com  Fax: 1-631-938-8127

 45-1 Ramsey Road, Shirley, NY 11967, USA

CAS No. 94716-94-6

Hemolysis unit

A hemolysis unit was frozen at 37 centigrade for 30 minutes, and then at 4 centigrade for 30 minutes. After that, 1% rabbit red blood cells suspended in phosphate buffered saline with pH 7.0 and containing 1% bovine serum albumin were 50% dissolved.

GENE INFORMATION

Gene Name

SAOUHSC_01121 alpha-hemolysin [*Staphylococcus aureus* subsp. *aureus* NCTC 8325]

Official Symbol

SAOUHSC_01121

Synonyms

SAOUHSC_01121; alpha-hemolysin precursor; Hla; Alpha-hemolysin; hly; hla; Alpha-HL; Alpha-toxin

Gene ID

3920722

Protein Refseq

YP_499665

UniProt ID

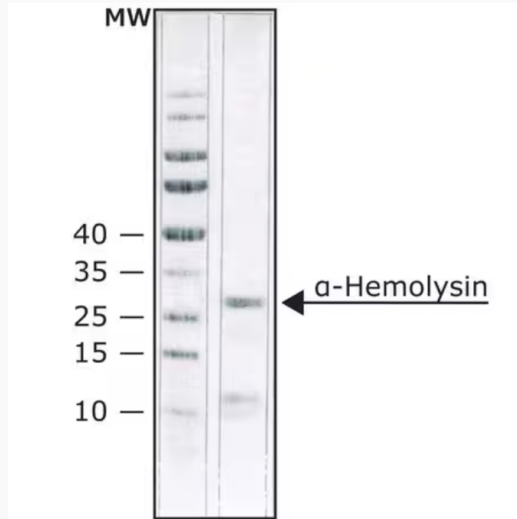
Q2G1X0

 Tel: 1-631-559-9269 1-516-512-3133

 Email: info@creative-biomart.com  Fax: 1-631-938-8127

 45-1 Ramsey Road, Shirley, NY 11967, USA

SDS-PAGE



 Tel: 1-631-559-9269 1-516-512-3133

 Email: info@creative-biomart.com  Fax: 1-631-938-8127

 45-1 Ramsey Road, Shirley, NY 11967, USA