

Recombinant Mouse Hpse protein, His-tagged

Cat. No. Hpse-706M Lot. No. (See product label)

SPECIFICATION

| | |
|-------------------------|---|
| Product Overview | Recombinant Mouse Hpse aa. (Ala353~Arg464 (Accession # Q6YGGZ1)) fused with N-terminal His tag was produced in E. coli cells. |
| Species | Mouse |
| Source | E.coli |
| ProteinLength | Ala353~Arg464 |
| Description | This gene encodes an endoglucuronidase enzyme that plays an important role in tumor invasion and metastasis. The encoded preproprotein undergoes proteolytic processing to generate an active heterodimeric enzyme that cleaves the heparan sulfate proteoglycans associated with the cell surface and extracellular matrix. Mice lacking the encoded protein do not show any prominent pathological alterations under normal conditions but fail to develop albuminuria and renal damage in response to drug-induced diabetes. |
| Form | Freeze-dried powder |
| Molecular Mass | Predicted Molecular Mass: 14.5kDa |
| Endotoxin | <1.0EU per 1g (determined by the LAL method) |
| Purity | >95% |

 Tel: 1-631-559-9269 1-516-512-3133

 Email: info@creative-biomart.com  Fax: 1-631-938-8127

 45-1 Ramsey Road, Shirley, NY 11967, USA

| | |
|-----------------------|---|
| Characteristic | The isoelectric point is 6.6. |
| Applications | SDS-PAGE; WB; ELISA; IP |
| Stability | The thermal stability is described by the loss rate. The loss rate was determined by accelerated thermal degradation test, that is, incubate the protein at 37°C for 48h, and no obvious degradation and precipitation were observed. The loss rate is less than 5% within the expiration date under appropriate storage condition. |
| Storage | Avoid repeated freeze/thaw cycles. Store at 2-8°C for one month. Aliquot and store at -80°C for 12 months. |
| Storage buffer | Supplied as lyophilized form in PBS, pH7.4, containing 5% trehalose, 0.01% sarcosyl. |
| Reconstitution | Reconstitute in sterile PBS, pH7.2-pH7.4. |

GENE INFORMATION

| | |
|------------------------|---|
| Gene Name | Hpse heparanase [<i>Mus musculus</i> (house mouse)] |
| Official Symbol | Hpse |
| Synonyms | Hpse; heparanase; Hpa; HSE1; Hpr1; endo-glucuronidase; endoglycosidase heparanase |
| Gene ID | 15442 |
| mRNA Refseq | NM_152803.5 |
| Protein Refseq | NP_690016.1 |

 Tel: 1-631-559-9269 1-516-512-3133

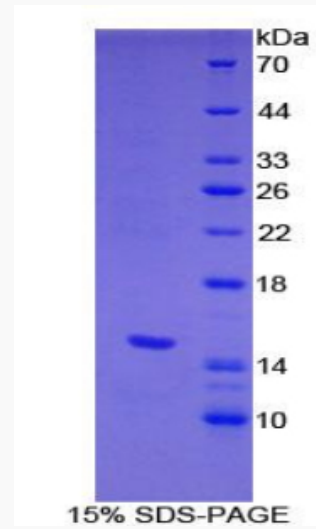
 Email: info@creative-biomart.com  Fax: 1-631-938-8127

 45-1 Ramsey Road, Shirley, NY 11967, USA

UniProt ID

Q6YGZ1

SDS-PAGE



 Tel: 1-631-559-9269 1-516-512-3133

 Email: info@creative-biomart.com  Fax: 1-631-938-8127

 45-1 Ramsey Road, Shirley, NY 11967, USA