

Recombinant Human IAHI1 protein, His-tagged

Cat. No. IAHI1-14026H Lot. No. (See product label)

SPECIFICATION

| | |
|-------------------------|---|
| Product Overview | Recombinant Human IAHI1 protein(1-248 aa), fused with N-terminal His tag, was expressed in E.coli. |
| Species | Human |
| Source | E.coli |
| ProteinLength | 1-248 aa |
| Form | The purified protein was Lyophilized from sterile PBS (58mM Na ₂ HPO ₄ , 17mM NaH ₂ PO ₄ , 68mM NaCl, pH7.4). 5 % trehalose and 5 % mannitol are added as protectant before lyophilization. The elution buffer contain 300mM imidazole. |
| AASequence | MALCEAAGCGSALLWPRLLLFGDSITQFSFQQGGWGASLADRLVRKCDVLNRGFS GYNTRWAKIILPRLIRKGNLSDIPVAVTIFFGANDSALKDENPKQHIPLEEYAANLKSM VQYLKSVDPENRVILITPTPLCETAWEEQCIIQGCKLNRLNSVVGEYANACLQVAQD CGTDVLDLWTLMQDSQDFSSYLSLSDGLHLSPKGNFLFSLHWPLIEKKVSSLPLLLPY WRDVAEAKPELSLLGDGDH |
| Purity | 85%, by SDS-PAGE with Coomassie Brilliant Blue staining. |
| Storage | Store at 2-8°C for 1-2 weeks. Aliquot and store at -20°C to -80°C for up to 3 months, reconstitution with sterile water and addition of an equal volume of glycerol. Avoid repeat freeze-thaw cycles. |

 Tel: 1-631-559-9269 1-516-512-3133

 Email: info@creative-biomart.com  Fax: 1-631-938-8127

 45-1 Ramsey Road, Shirley, NY 11967, USA

Reconstitution

Dissolve the product in 200 µl sterile water to achieve a working concentration of 0.25 g/µl. If experimental compatibility allows, mix the aqueous solution with an equal volume of glycerol (1:1 ratio) after initial reconstitution.

GENE INFORMATION

| | |
|------------------------|---|
| Gene Name | IAH1 isoamyl acetate-hydrolyzing esterase 1 homolog (<i>S. cerevisiae</i>) [<i>Homo sapiens</i>] |
| Official Symbol | IAH1 |
| Synonyms | IAH1; isoamyl acetate-hydrolyzing esterase 1 homolog (<i>S. cerevisiae</i>); isoamyl acetate-hydrolyzing esterase 1 homolog; MGC102860; |
| Gene ID | 285148 |
| mRNA Refseq | NM_001039613 |
| Protein Refseq | NP_001034702 |
| UniProt ID | Q2TAA2 |

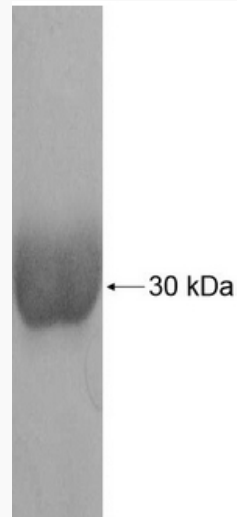
 Tel: 1-631-559-9269 1-516-512-3133

 Email: info@creative-biomart.com  Fax: 1-631-938-8127

 45-1 Ramsey Road, Shirley, NY 11967, USA



SDS-PAGE



Tel: 1-631-559-9269 1-516-512-3133

Email: info@creative-biomart.com Fax: 1-631-938-8127

45-1 Ramsey Road, Shirley, NY 11967, USA