

Active Recombinant Full Length Human IBSP Protein, His-tagged

Cat. No. IBSP-12HFL Lot. No. (See product label)

SPECIFICATION

Product Overview Recombinant Full Length Human IBSP Protein, fused to His-tag, was expressed in HEK293T.

Species Human

Source HEK293

ProteinLength 307aa

Description The protein encoded by this gene is a major structural protein of the bone matrix. It constitutes approximately 12% of the noncollagenous proteins in human bone and is synthesized by skeletal-associated cell types, including hypertrophic chondrocytes, osteoblasts, osteocytes, and osteoclasts. The only extraskelatal site of its synthesis is the trophoblast. This protein binds to calcium and hydroxyapatite via its acidic amino acid clusters, and mediates cell attachment through an RGD sequence that recognizes the vitronectin receptor.

Form Liquid in. Phosphate-Buffered Saline (pH 7.4) containing 10% glycerol.

Bio-activity Measured by the ability of the immobilized protein to support the adhesion of MCF7 human breast cancer cells. When cells are added to Human IBSP coated plates 3 ug/ml. This effect is more to 40%.

Molecular Mass 34.3 kDa

 Tel: 1-631-559-9269 1-516-512-3133

 Email: info@creative-biomart.com  Fax: 1-631-938-8127

 45-1 Ramsey Road, Shirley, NY 11967, USA

Endotoxin	< 1 EU per 1ug of protein (determined by LAL method)
Purity	> 90% by SDS-PAGE
Applications	SDS-PAGE, Bioactivity
Notes	For research use only. This product is not intended or approved for human, diagnostics or veterinary use.
Storage	Can be stored at 2 centigrade to 8 centigrade for 1 week. For long term storage, aliquot and store at -20 centigrade to -80 centigrade. Avoid repeated freezing and thawing cycles.
Concentration	0.5mg/ml (determined by Absorbance at 280nm)

GENE INFORMATION

Gene Name	IBSP integrin binding sialoprotein [Homo sapiens (human)]
Official Symbol	IBSP
Synonyms	BSP; BNSP; SP-II; BSP-II
Gene ID	3381
mRNA Refseq	NM_004967.4
Protein Refseq	NP_004958.2
MIM	147563

 Tel: 1-631-559-9269 1-516-512-3133

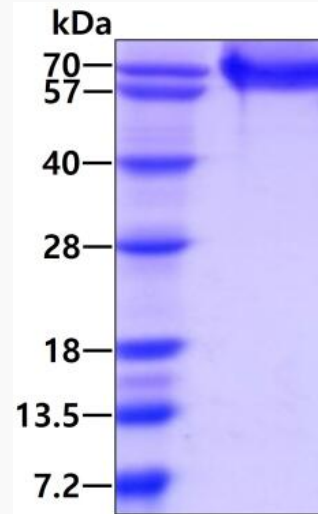
 Email: info@creative-biomart.com  Fax: 1-631-938-8127

 45-1 Ramsey Road, Shirley, NY 11967, USA

UniProt ID

P21815

SDS-PAGE



3ug by SDS-PAGE under reducing condition and visualized by coomassie blue stain.

 Tel: 1-631-559-9269 1-516-512-3133

 Email: info@creative-biomart.com  Fax: 1-631-938-8127

 45-1 Ramsey Road, Shirley, NY 11967, USA