

Recombinant Human ICA1 protein, His-tagged

Cat. No. ICA1-25H Lot. No. (See product label)

SPECIFICATION

Product Overview	Recombinant Human ICA1(Met1~Gly258) fused with His tag at N-terminal was expressed in E. coli.
Species	Human
Source	E.coli
ProteinLength	Met1~Gly258
Description	This gene encodes a protein with an arfaptin homology domain that is found both in the cytosol and as membrane-bound form on the Golgi complex and immature secretory granules. This protein is believed to be an autoantigen in insulin-dependent diabetes mellitus and primary Sjogren's syndrome. Several transcript variants encoding two different isoforms have been found for this gene.
Form	20mM Tris, 150mM NaCl,pH8.0, containing 1mM EDTA, 1mM DTT, 0.01% SKL, 5% Trehalose and Proclin300.
Molecular Mass	Predicted Molecular Mass: 36.9kDa; Accurate Molecular Mass: 27kDa(Analysis of differences refer to the manual)
Endotoxin	Less than 1.0 EU per µg by the LAL method.
Purity	> 95%

 Tel: 1-631-559-9269 1-516-512-3133

 Email: info@creative-biomart.com  Fax: 1-631-938-8127

 45-1 Ramsey Road, Shirley, NY 11967, USA

Applications	SDS-PAGE; WB; ELISA; IP; CoIP; Purification; Amine Reactive Labeling
Stability	The thermal stability is described by the loss rate. The loss rate was determined by accelerated thermal degradation test, that is, incubate the protein at 37 centigrade for 48h, and no obvious degradation and precipitation were observed. The loss rate is less than 5% within the expiration date under appropriate storage condition.
Storage	Avoid repeated freeze/thaw cycles. Store at 2-8 centigrade for one month. Aliquot and store at -80 centigrade for 12 months.
Reconstitution	Reconstitute in 20mM Tris, 150mM NaCl (pH8.0) to a concentration of 0.1-1.0 mg/mL. Do not vortex.

GENE INFORMATION

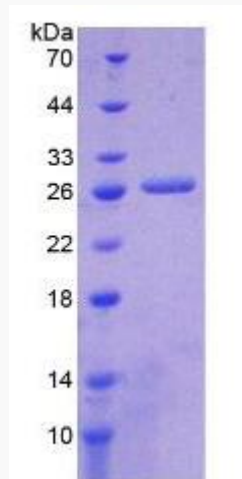
Gene Name	ICA1 islet cell autoantigen 1, 69kDa [Homo sapiens]
Official Symbol	ICA1
Synonyms	ICA1; islet cell autoantigen 1, 69kDa; islet cell autoantigen 1 (69kD); islet cell autoantigen 1; ICAp69; p69; islet cell autoantigen p69; 69 kDa islet cell autoantigen; islet cell autoantigen 1 isoform; diabetes mellitus type I autoantigen; ICA69;
Gene ID	3382
mRNA Refseq	NM_001136020
Protein Refseq	NP_001129492
MIM	147625

 Tel: 1-631-559-9269 1-516-512-3133

 Email: info@creative-biomart.com  Fax: 1-631-938-8127

 45-1 Ramsey Road, Shirley, NY 11967, USA

UniProt ID	Q05084
Chromosome Location	7p22
Pathway	Type I diabetes mellitus, organism-specific biosystem; Type I diabetes mellitus, conserved biosystem;
Function	molecular_function; protein domain specific binding;



 Tel: 1-631-559-9269 1-516-512-3133

 Email: info@creative-biomart.com  Fax: 1-631-938-8127

 45-1 Ramsey Road, Shirley, NY 11967, USA