

## Recombinant Human ICA1 protein, His&Myc-tagged

Cat. No. ICA1-2762H Lot. No. (See product label)

### SPECIFICATION

<b>Product Overview</b>	Recombinant Human ICA1 protein(Q05084)(1-483aa), fused with N-terminal His tag and C-terminal Myc tag, was expressed in E. coli.
<b>Species</b>	Human
<b>Source</b>	E.coli
<b>ProteinLength</b>	1-483aa
<b>Form</b>	If the delivery form is liquid, the default storage buffer is Tris/PBS-based buffer, 5%-50% glycerol. If the delivery form is lyophilized powder, the buffer before lyophilization is Tris/PBS-based buffer, 6% Trehalose.
<b>Storage</b>	Store at -20°C/-80°C upon receipt, aliquoting is necessary for mutiple use. Avoid repeated freeze-thaw cycles.
<b>Molecular Mass</b>	62.1 kDa
<b>AA Sequence</b>	MSGHKCSYPWDLQDRYAQDKSVVNKMQQKYWETKQAFIKATGKKEDEHVVASDA DLDAKLELFHSIQRTCLDLSKAIVLYQKRICFLSQEENELGKFLRSQGFQDKTRAGKM MQATGKALCFSSQQRLLRNPLCRFHQEVETFRHRAISDTWLTVNRMEQCRTEYR GALLWMKDVSQELDPDLYKQMEKFRKVQTQVRLAKKNFDKLMKMDVCQKVDLLGAS RCNLLSHMLATYQTTLLHFWEKTSHTMAAIHESFKGYQPYEFTTLKSLQDPMKKLVE KEEKKINQQESTDAAVQEPSQLISLEEENQRKESSEFKTEDGKSILSALDKGSTHTA CSGPIDELLDKSEEGACLGPVAGTPEPEGADKDDLLLLSEIFNASSLEEGEFSKEW

 Tel: 1-631-559-9269 1-516-512-3133

 Email: [info@creative-biomart.com](mailto:info@creative-biomart.com)  Fax: 1-631-938-8127

 45-1 Ramsey Road, Shirley, NY 11967, USA

AAVFGDGGQVKEPVPTMALGEPDKAQTGSGFLPSQLLDQNMKDLQASLQEPAKAA  
SDLTAWFSLFADLDPLSNPDAVGKTDKEHELLNA

**Purity** Greater than 85% as determined by SDS-PAGE.

## GENE INFORMATION

**Official Symbol** [ICA1](#)

**Synonyms** ICA1; islet cell autoantigen 1, 69kDa; islet cell autoantigen 1 (69kD); islet cell autoantigen 1; ICAp69; p69; islet cell autoantigen p69; 69 kDa islet cell autoantigen; islet cell autoantigen 1 isoform; diabetes mellitus type I autoantigen; ICA69;

**Gene ID** [3382](#)

**mRNA Refseq** [NM\\_001136020](#)

**Protein Refseq** [NP\\_001129492](#)

**MIM** [147625](#)

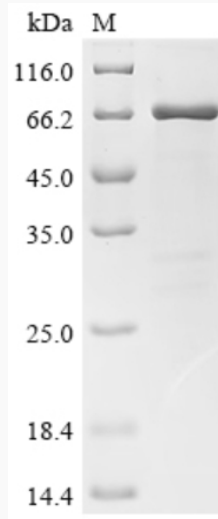
**UniProt ID** [Q05084](#)

 Tel: 1-631-559-9269 1-516-512-3133

 Email: [info@creative-biomart.com](mailto:info@creative-biomart.com)  Fax: 1-631-938-8127

 45-1 Ramsey Road, Shirley, NY 11967, USA

**SDS-PAGE**



 Tel: 1-631-559-9269 1-516-512-3133

 Email: [info@creative-biomart.com](mailto:info@creative-biomart.com)  Fax: 1-631-938-8127

 45-1 Ramsey Road, Shirley, NY 11967, USA