

## Recombinant Human ICA1 protein(261-350 aa), C-His-tagged

Cat. No. ICA1-2828H Lot. No. (See product label)

### SPECIFICATION

<b>Product Overview</b>	Recombinant Human ICA1 protein(Q05084)(261-350 aa), fused with C-terminal His tag, was expressed in E. coli.
<b>Species</b>	Human
<b>Source</b>	E.coli
<b>ProteinLength</b>	261-350 aa
<b>Form</b>	0.15 M Phosphate buffered saline
<b>Molecular Mass</b>	12 kDa
<b>Storage</b>	Shipped on dry ice. Avoid repeated freeze-thaw cycles. Upon receipt, 2 days when stored at 2 to 8 °C after thawing. Up to 12 months when aliquoted and stored at -20 to -80°C.
<b>Reconstitution</b>	It is recommended that sterile water be added to the vial to prepare a stock solution of 0.2 ug/ul. Centrifuge the vial at 4°C before opening to recover the entire contents.
<b>AA Sequence</b>	PYEFTTLKSLQDPMKKLVEKEEKKKINQQESTDAAVQEPSQLISLEEENQRKESSSF KTEDGKSILSALDKGSTHTACSGPIDELLDMKS

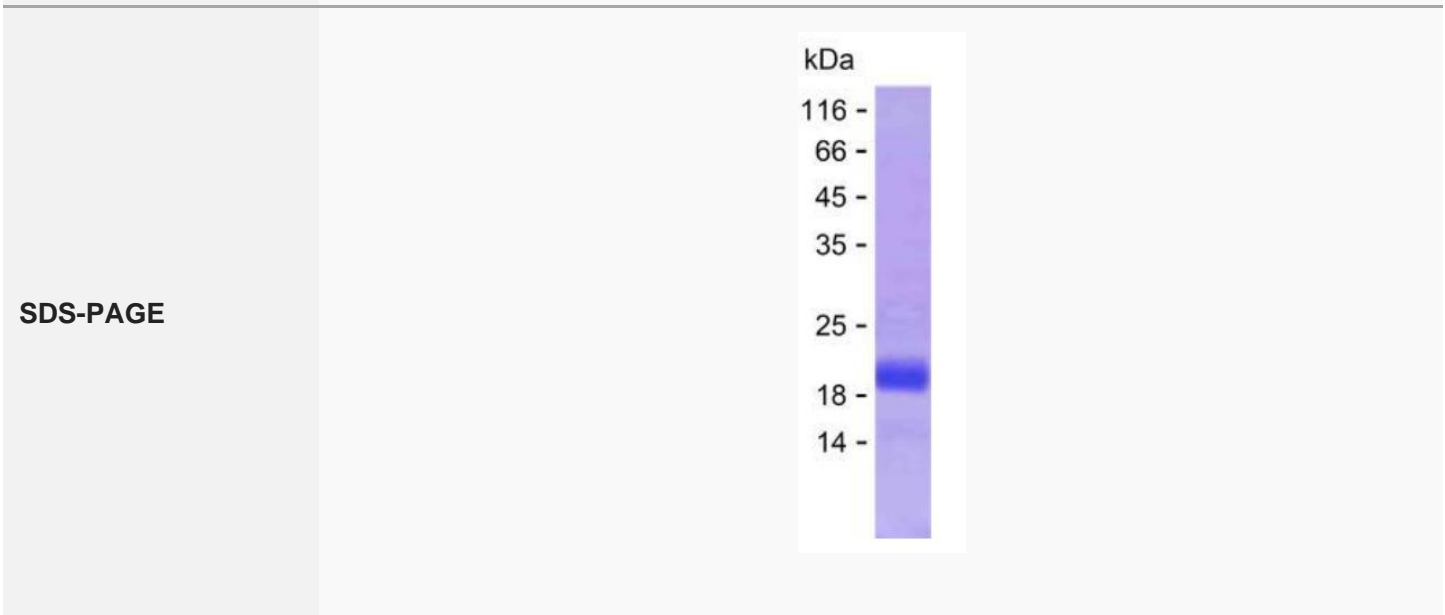
### GENE INFORMATION

 Tel: 1-631-559-9269 1-516-512-3133

 Email: [info@creative-biomart.com](mailto:info@creative-biomart.com)  Fax: 1-631-938-8127

 45-1 Ramsey Road, Shirley, NY 11967, USA

<b>Gene Name</b>	ICA1 islet cell autoantigen 1, 69kDa [ Homo sapiens ]
<b>Official Symbol</b>	ICA1
<b>Synonyms</b>	ICA1; islet cell autoantigen 1, 69kDa; islet cell autoantigen 1 (69kD); islet cell autoantigen 1; ICAp69; p69; islet cell autoantigen p69; 69 kDa islet cell autoantigen; islet cell autoantigen 1 isoform; diabetes mellitus type I autoantigen; ICA69;
<b>Gene ID</b>	3382
<b>mRNA Refseq</b>	NM_001136020
<b>Protein Refseq</b>	NP_001129492
<b>MIM</b>	147625
<b>UniProt ID</b>	Q05084



Tel: 1-631-559-9269 1-516-512-3133

Email: [info@creative-biomart.com](mailto:info@creative-biomart.com) Fax: 1-631-938-8127

45-1 Ramsey Road, Shirley, NY 11967, USA