

Recombinant Human ICA1 protein, GST-tagged

Cat. No. ICA1-28632TH **Lot. No.** (See product label)

SPECIFICATION

| | |
|-------------------------|---|
| Product Overview | Recombinant Human ICA1(1 a.a. - 110 a.a.) fused with GST tag at N-terminal was expressed in Wheat Germ. |
| Species | Human |
| Source | Wheat Germ |
| ProteinLength | 1-110 a.a. |
| Description | This gene encodes a protein with an arfaptin homology domain that is found both in the cytosol and as membrane-bound form on the Golgi complex and immature secretory granules. This protein is believed to be an autoantigen in insulin-dependent diabetes mellitus and primary Sjogren's syndrome. Several transcript variants encoding two different isoforms have been found for this gene. |
| Form | 50 mM Tris-HCl, 10 mM reduced Glutathione, pH=8.0 in the elution buffer. |
| Molecular Mass | 37.84 kDa |
| AA Sequence | MSGHKCSYPWDLQDRYAQDKSVVNKMQQKYWETKQAFIKATGKKKEDEHVVASDA DLDAKLELFHSIQRTCLDLSKAIVLYQKRICFLSQEENELGKFLRSQGFQDKTRAG |
| Applications | Enzyme-linked Immunoabsorbent Assay; Western Blot (Recombinant protein); Antibody Production; Protein Array |

 Tel: 1-631-559-9269 1-516-512-3133

 Email: info@creative-biomart.com  Fax: 1-631-938-8127

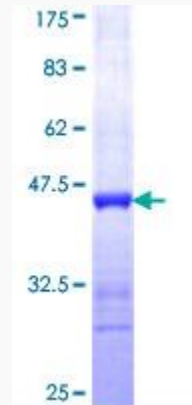
 45-1 Ramsey Road, Shirley, NY 11967, USA

| | |
|----------------------------|--|
| Notes | Best use within three months from the date of receipt of this protein. |
| Storage | Store at -80 centigrade. Aliquot to avoid repeated freezing and thawing. |
| GENE INFORMATION | |
| Gene Name | ICA1 islet cell autoantigen 1, 69kDa [Homo sapiens] |
| Official Symbol | ICA1 |
| Synonyms | ICA1; islet cell autoantigen 1, 69kDa; islet cell autoantigen 1 (69kD); islet cell autoantigen 1; ICAp69; p69; islet cell autoantigen p69; 69 kDa islet cell autoantigen; islet cell autoantigen 1 isoform; diabetes mellitus type I autoantigen; ICA69; |
| Gene ID | 3382 |
| mRNA Refseq | NM_022307 |
| Protein Refseq | NP_071682 |
| MIM | 147625 |
| UniProt ID | Q05084 |
| Chromosome Location | 7p22 |
| Pathway | Type I diabetes mellitus, organism-specific biosystem; Type I diabetes mellitus, conserved biosystem; |
| Function | molecular_function; protein domain specific binding; |

 Tel: 1-631-559-9269 1-516-512-3133

 Email: info@creative-biomart.com  Fax: 1-631-938-8127

 45-1 Ramsey Road, Shirley, NY 11967, USA



 Tel: 1-631-559-9269 1-516-512-3133

 Email: info@creative-biomart.com  Fax: 1-631-938-8127

 45-1 Ramsey Road, Shirley, NY 11967, USA