

Recombinant Human ICA1 Protein, Myc/DDK-tagged, C13 and N15-labeled

Cat. No. ICA1-3708H **Lot. No.** (See product label)

SPECIFICATION

Product Overview

ICA1 MS Standard C13 and N15-labeled recombinant protein (NP_004959) with a C-terminal MYC/DDK tag, was expressed in HEK293 cells.

Species

Human

Source

HEK293

Description

This gene encodes a protein with an arfaptin homology domain that is found both in the cytosol and as membrane-bound form on the Golgi complex and immature secretory granules. This protein is believed to be an autoantigen in insulin-dependent diabetes mellitus and primary Sjogren's syndrome. Several transcript variants encoding two different isoforms have been found for this gene.

Molecular Mass

54.5 kDa

AA Sequence

MSGHKCYPWDLQDRYAQDKSVVNKMQQKYWETKQAFIKATGKKEDEHVVASDAD
LDAKLELFHSIQRTCLDLSKAIVLYQKRICFLSQEENELGKFLRSQGFQDKTRAGKMM
QATGKALCFSSQQRLALRNPLCRFHQEVETFRHRAISDTWLTVNRMEQCRTEYRG
ALLWMKDVSQELDPDLYKQMEKFRKVQTQVRLAKKNFDKMKMDVCQKVDLLGASR
CNLLSHMLATYQTTLLHFWEKTSHTMAAIHESFKGYQPYEFTTLKSLQDPMKKLVEK
EEKKKINQQESTDAAVQEPSQLISLEEENQRKESSEFKTEDGKSILSALDKGSTHTAC
SGPIDELDMKSEEGACLGPVAGTPEPEGADKDDLLLLSEIFNASSLEEGEFSKEWA
AVFGDGQVKEPVPTMALGEPDPAQTGSGFLPSQLLDQNMKDLQASLQEPAKAAS

 Tel: 1-631-559-9269 1-516-512-3133

 Email: info@creative-biomart.com  Fax: 1-631-938-8127

 45-1 Ramsey Road, Shirley, NY 11967, USA

	DLTAWFSLFADLDPLSNPDAVGKTDKEHELLNATRTRPLEQKLISEEDLAANDILDYK DDDDKV
Purity	> 80% as determined by SDS-PAGE and Coomassie blue staining
Stability	Stable for 3 months from receipt of products under proper storage and handling conditions.
Storage	Store at -80 centigrade. Avoid repeated freeze-thaw cycles.
Concentration	50 µg/mL as determined by BCA
Storage Buffer	100 mM glycine, 25 mM Tris-HCl, pH 7.3.

GENE INFORMATION

Gene Name	ICA1 islet cell autoantigen 1 [Homo sapiens (human)]
Official Symbol	ICA1
Synonyms	ICA1; islet cell autoantigen 1, 69kDa; islet cell autoantigen 1 (69kD); islet cell autoantigen 1; ICAp69; p69; islet cell autoantigen p69; 69 kDa islet cell autoantigen; islet cell autoantigen 1 isoform; diabetes mellitus type I autoantigen; ICA69;
Gene ID	3382
mRNA Refseq	NM_004968
Protein Refseq	NP_004959
MIM	147625

 Tel: 1-631-559-9269 1-516-512-3133

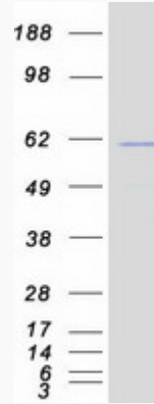
 Email: info@creative-biomart.com  Fax: 1-631-938-8127

 45-1 Ramsey Road, Shirley, NY 11967, USA

UniProt ID

Q05084

SDS-PAGE



 Tel: 1-631-559-9269 1-516-512-3133

 Email: info@creative-biomart.com  Fax: 1-631-938-8127

 45-1 Ramsey Road, Shirley, NY 11967, USA