

# Recombinant Human ICA1 Protein, Myc/DDK-tagged, C13 and N15-labeled

**Cat. No.** ICA1-6160H    **Lot. No.** (See product label)

## SPECIFICATION

<b>Product Overview</b>	ICA1 MS Standard C13 and N15-labeled recombinant protein (NP_001129492) with a C-terminal MYC/DDK tag, was expressed in HEK293 cells.
<b>Species</b>	Human
<b>Source</b>	HEK293
<b>Description</b>	This gene encodes a protein with an arfaptin homology domain that is found both in the cytosol and as membrane-bound form on the Golgi complex and immature secretory granules. This protein is believed to be an autoantigen in insulin-dependent diabetes mellitus and primary Sjogren's syndrome. Several transcript variants encoding two different isoforms have been found for this gene.
<b>Molecular Mass</b>	54.5 kDa
<b>AA Sequence</b>	MSGHKCYPWDLQDRYAQDKSVVNKMQQKYWETKQAFIKATGKKEDEHVVASDAD LDAKLELFHSIQRTCLDLSKAIVLYQKRICFLSQEENELGKFLRSQGFQDKTRAGKMM QATGKALCFSSQQRLALRNPLCRFHQEVETFRHRAISDTWLTVNRMEQCRTEYRG ALLWMKDVSQELDPDLYKQMEKFRKVQTQVRLAKKNFDKLMKMDVCQKVDLLGASR CNLLSHMLATYQTTLLHFWEKTSHTMAAIHESFKGYQPYEFTTLKSLQDPMKKLVEK EEKKKINQQESTDAAVQEPSQLISLEENQRKESSEFKTEDGKSILSALDKGSTHTAC SGPIDELDMKSEEGACLGPVAGTPEPEGADKDDLLLSEIFNASSLEEGEFSKEWA AVFGDGQVKEPVPTMALGEPDPAQTGSGFLPSQLLDQNMKDLQASLQEPAKAAS

 Tel: 1-631-559-9269    1-516-512-3133

 Email: [info@creative-biomart.com](mailto:info@creative-biomart.com)     Fax: 1-631-938-8127

 45-1 Ramsey Road, Shirley, NY 11967, USA

	DLTAWFSLFADLDPLSNPDAVGKTDKEHELLNATRTRPLEQKLISEEDLAANDILDYK DDDDKV
<b>Purity</b>	> 80% as determined by SDS-PAGE and Coomassie blue staining
<b>Stability</b>	Stable for 3 months from receipt of products under proper storage and handling conditions.
<b>Storage</b>	Store at -80 centigrade. Avoid repeated freeze-thaw cycles.
<b>Concentration</b>	50 µg/mL as determined by BCA
<b>Storage Buffer</b>	100 mM glycine, 25 mM Tris-HCl, pH 7.3.

## GENE INFORMATION

<b>Gene Name</b>	ICA1 islet cell autoantigen 1 [ Homo sapiens (human) ]
<b>Official Symbol</b>	ICA1
<b>Synonyms</b>	ICA1; islet cell autoantigen 1, 69kDa; islet cell autoantigen 1 (69kD); islet cell autoantigen 1; ICAp69; p69; islet cell autoantigen p69; 69 kDa islet cell autoantigen; islet cell autoantigen 1 isoform; diabetes mellitus type I autoantigen; ICA69;
<b>Gene ID</b>	3382
<b>mRNA Refseq</b>	NM_001136020
<b>Protein Refseq</b>	NP_001129492
<b>MIM</b>	147625

 Tel: 1-631-559-9269 1-516-512-3133

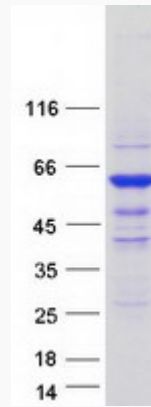
 Email: [info@creative-biomart.com](mailto:info@creative-biomart.com)  Fax: 1-631-938-8127


 45-1 Ramsey Road, Shirley, NY 11967, USA

UniProt ID


Q05084

SDS-PAGE



 Tel: 1-631-559-9269 1-516-512-3133

 Email: [info@creative-biomart.com](mailto:info@creative-biomart.com)  Fax: 1-631-938-8127

 45-1 Ramsey Road, Shirley, NY 11967, USA