

# Recombinant Full Length Human ICAM1 Protein, C-Flag-tagged

Cat. No. ICAM1-1179HFL Lot. No. (See product label)

## SPECIFICATION

### Product Overview

Recombinant Full Length Human ICAM1 Protein, fused to Flag-tag at C-terminus, was expressed in Mammalian cells.

### Species

Human

### Source

Mammalian Cells

### Description

This gene encodes a cell surface glycoprotein which is typically expressed on endothelial cells and cells of the immune system. It binds to integrins of type CD11a / CD18, or CD11b / CD18 and is also exploited by Rhinovirus as a receptor.

### Form

25 mM Tris HCl, pH 7.3, 100 mM glycine, 10% glycerol.

### Molecular Mass

55.2 kDa

### AA Sequence

MAPSSRPALPALLVLLGALFPGPGNAQTSVSPSKVILPRGGSVLVTCSTSCDQPKL  
 LGIETPLPKKELL LPGNNRKVYELSNVQEDSQPMCYSNCPDGQSTAKTFLTIVYWTP  
 ERVELAPLPSWQPVGKNLTLRCQVEGG APRANLTVLLRGEKELKREPAVGEPAE  
 VTTTVLVRRDHHGANFSCRTELDLRPQGLELFENTSAPYQLQ TFVLPATPPQLVSP  
 RVLEVDVTQGTVVCSLDGLFPVSEAQVHLALGDQRLNPTVTYGNDSFSAKASVSVTA  
 EDEGTQRLTCAVILGNQSQETLQTVTIYSFPAPNVILTKPEVSEGTEVTVKCEAHPRA  
 KVTLNGVPAQPL GPRAQLLLKATPEDNGRSFSCSATLEVAGQLIHKNTRELRVLY  
 GPRLDERDCPGNWTWPENSQQTPMCQ AWGNPLPELKCLKDGTFFPLPIGESVTVT  
 RDLEGTYLCRARSTQGEVTREVTNVLSPRYEIVITVVA

 Tel: 1-631-559-9269 1-516-512-3133

 Email: [info@creative-biomart.com](mailto:info@creative-biomart.com)  Fax: 1-631-938-8127

 45-1 Ramsey Road, Shirley, NY 11967, USA

VIMGTAGLSTYLYNRQRKIKKYRLQQAQKGTMPKPNTQATPPTTRTRPLEQKLISEED  
LAANDILDYKDDDDKV

|                         |   |
|-------------------------|---|
| <b>Purity</b>           | > 80% as determined by SDS-PAGE and Coomassie blue staining.  |
| <b>Stability</b>        | Stable for 12 months from the date of receipt of the product under proper storage and handling conditions. Avoid repeated freeze-thaw cycles. |
| <b>Storage</b>          | Store at -80 centigrade.  |
| <b>Concentration</b>    | >50 ug/mL as determined by microplate BCA method.   |
| <b>Preparation</b>      | Recombinant protein was captured through anti-DDK affinity column followed by conventional chromatography steps.                              |
| <b>Protein Families</b> | Druggable Genome, ES Cell Differentiation/IPS, Transmembrane  |
| <b>Protein Pathways</b> | Cell adhesion molecules (CAMs), Leukocyte transendothelial migration, Natural killer cell mediated cytotoxicity, Viral myocarditis            |
| <b>Full Length</b>      | Full L.   |

## GENE INFORMATION

|                        |  |
|------------------------|--|
| <b>Gene Name</b>       | ICAM1 intercellular adhesion molecule 1 [ Homo sapiens (human) ] |
| <b>Official Symbol</b> | ICAM1  |
| <b>Synonyms</b>        | BB2; CD54; P3.58   |
| <b>Gene ID</b>         | 3383   |

 Tel: 1-631-559-9269 1-516-512-3133

 Email: [info@creative-biomart.com](mailto:info@creative-biomart.com)  Fax: 1-631-938-8127

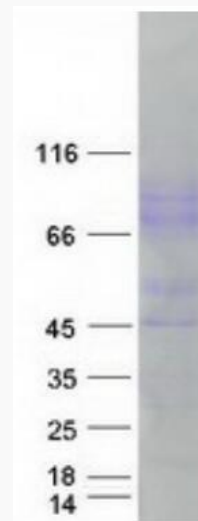
 45-1 Ramsey Road, Shirley, NY 11967, USA

mRNA Refseq [NM\\_000201.3](#)

Protein Refseq [NP\\_000192.2](#)

MIM [147840](#)

UniProt ID [P05362](#)



Coomassie blue staining of purified ICAM1 protein.

 Tel: 1-631-559-9269 1-516-512-3133

 Email: [info@creative-biomart.com](mailto:info@creative-biomart.com)  Fax: 1-631-938-8127

 45-1 Ramsey Road, Shirley, NY 11967, USA