

Recombinant Human ICAM2 Protein (Met1-Gln223), C-His tagged

Cat. No. ICAM2-1592H Lot. No. (See product label)

SPECIFICATION

Product Overview	Recombinant human ICAM2 (Met1-Gln223) fused with the C-terminal His tag was expressed in Mammalian cells.
Species	Human
Source	Mammalian Cells
ProteinLength	Met1-Gln223
Form	Lyophilized powder/frozen liquid
Molecular Mass	23.02 kDa
Purity	>90% as determined by SDS-PAGE.
Notes	For research use only.
Storage	Use a manual defrost freezer and avoid repeated freeze thaw cycles. Store at 2 to 8 centigrade for one week. Store at -20 to -80 centigrade for twelve months from the date of receipt.
Storage Buffer	Supplied as solution form in PBS, pH 7.5 or lyophilized from PBS, pH 7.5.
Reconstitution	Reconstitute in sterile water for a stock solution.

 Tel: 1-631-559-9269 1-516-512-3133

 Email: info@creative-biomart.com  Fax: 1-631-938-8127

 45-1 Ramsey Road, Shirley, NY 11967, USA

Shipping

They are shipped out with dry ice/blue ice unless customers require otherwise.

GENE INFORMATION

Gene Name ICAM2 intercellular adhesion molecule 2 [Homo sapiens (human)]

Official Symbol ICAM2

Synonyms ICAM2; intercellular adhesion molecule 2; CD102; ICAM-2;

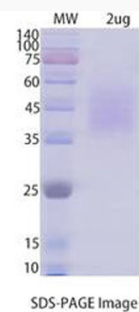
Gene ID 3384

mRNA Refseq NM_000873

Protein Refseq NP_000864

MIM 146630

UniProt ID P13598

SDS-PAGE


 Tel: 1-631-559-9269 1-516-512-3133

 Email: info@creative-biomart.com  Fax: 1-631-938-8127

 45-1 Ramsey Road, Shirley, NY 11967, USA