

Recombinant Human ICAM2 Protein (Lys25-Gln223), C-His tagged

Cat. No. ICAM2-2566H Lot. No. (See product label)

SPECIFICATION

Product Overview	Recombinant human ICAM2 (Lys25-Gln223) protein fused with the C-terminal His tag was expressed in Mammalian cells.
Species	Human
Source	Mammalian Cells
ProteinLength	Lys25-Gln223
Molecular Mass	21.89 kDa
Purity	>90 % as determined by SDS-PAGE.
Notes	For research use only.
Storage	Use a manual defrost freezer and avoid repeated freeze thaw cycles. Store at 2 to 8 centigrade for one week. Store at -20 to -80 centigrade for twelve months from the date of receipt.
Storage Buffer	Supplied as solution form in PBS or lyophilized from PBS.
Reconstitution	Reconstitute in sterile water for a stock solution.
Shipping	In general, proteins are provided as lyophilized powder/frozen liquid. They are

 Tel: 1-631-559-9269 1-516-512-3133

 Email: info@creative-biomart.com  Fax: 1-631-938-8127

 45-1 Ramsey Road, Shirley, NY 11967, USA

shipped out with dry ice/blue ice unless customers require otherwise.

GENE INFORMATION

Gene Name ICAM2 intercellular adhesion molecule 2 [Homo sapiens (human)]

Official Symbol ICAM2

Synonyms ICAM2; intercellular adhesion molecule 2; CD102; ICAM-2;

Gene ID 3384

mRNA Refseq NM_000873

Protein Refseq NP_000864

MIM 146630

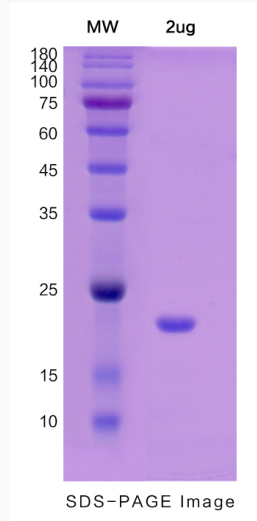
UniProt ID P13598

 Tel: 1-631-559-9269 1-516-512-3133

 Email: info@creative-biomart.com  Fax: 1-631-938-8127

 45-1 Ramsey Road, Shirley, NY 11967, USA

SDS-PAGE



 Tel: 1-631-559-9269 1-516-512-3133

 Email: info@creative-biomart.com  Fax: 1-631-938-8127

 45-1 Ramsey Road, Shirley, NY 11967, USA