

Recombinant Human ICAM4 Protein (Met1-Ala240), C-His tagged

Cat. No. ICAM4-4247H Lot. No. (See product label)

SPECIFICATION

Product Overview	Recombinant human ICAM4 (Met1-Ala240) fused with the C-terminal His tag was expressed in Mammalian cells.
Species	Human
Source	Mammalian Cells
ProteinLength	Met1-Ala240
Form	Lyophilized powder/frozen liquid
Molecular Mass	26.4 kDa
Endotoxin	< 1.0 EU/μg of the protein as determined by the LAL method.
Purity	>90% as determined by SDS-PAGE.
Notes	For research use only.
Storage	Use a manual defrost freezer and avoid repeated freeze thaw cycles. Store at 2 to 8 centigrade for one week. Store at -20 to -80 centigrade for twelve months from the date of receipt.
Storage Buffer	Supplied as solution form in PBS or lyophilized from PBS.

 Tel: 1-631-559-9269 1-516-512-3133

 Email: info@creative-biomart.com  Fax: 1-631-938-8127

 45-1 Ramsey Road, Shirley, NY 11967, USA

Reconstitution Reconstitute in sterile water for a stock solution.

Shipping They are shipped out with dry ice/blue ice unless customers require otherwise.

GENE INFORMATION

Gene Name ICAM4 intercellular adhesion molecule 4 (Landsteiner-Wiener blood group) [Homo sapiens (human)]

Official Symbol ICAM4

Synonyms ICAM4; intercellular adhesion molecule 4 (Landsteiner-Wiener blood group); intercellular adhesion molecule 4 (LW blood group), intercellular adhesion molecule 4, Landsteiner Wiener blood group, Landsteiner Wiener blood group, LW; intercellular adhesion molecule 4; CD242; CD242 antigen; LW blood group protein; Landsteiner-Wiener blood group antigen a; Landsteiner-Wiener blood group glycoprotein; intercellular adhesion molecule 4 (LW blood group); LW;

Gene ID 3386

mRNA Refseq NM_001039132

Protein Refseq NP_001034221

MIM 614088

UniProt ID Q14773

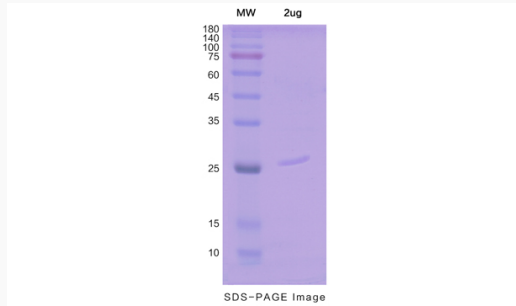
 Tel: 1-631-559-9269 1-516-512-3133

 Email: info@creative-biomart.com  Fax: 1-631-938-8127

 45-1 Ramsey Road, Shirley, NY 11967, USA



SDS-PAGE



Tel: 1-631-559-9269 1-516-512-3133

Email: info@creative-biomart.com Fax: 1-631-938-8127

45-1 Ramsey Road, Shirley, NY 11967, USA