

Recombinant Human ICOS protein, His-tagged

Cat. No. ICOS-378H Lot. No. (See product label)

SPECIFICATION

Product Overview	Recombinant Human ICOS protein(Q9Y6W8-1)(Glu21-Gln134), fused with C-terminal His tag, was expressed in HEK293.
Species	Human
Source	HEK293
ProteinLength	Glu21-Gln134
Tag	C-His
Form	Lyophilized from 0.22µm filtered solution in PBS (pH 7.4). Normally 5% trehalose is added as protectant before lyophilization.
Bio-activity	Immobilized Human ICOS, His Tag at 0.5µg/ml (100µl/Well) on the plate. Dose response curve for Human B7-H2, hFc Tag with the EC50 of 25.3ng/ml determined by ELISA.
Molecular Mass	The protein has a predicted MW of 14.6 kDa. Due to glycosylation, the protein migrates to 25-35 kDa based on Tris-Bis PAGE result.
Endotoxin	Less than 1EU per µg by the LAL method.
Purity	> 95% as determined by Tris-Bis PAGE; > 95% as determined by HPLC

 Tel: 1-631-559-9269 1-516-512-3133

 Email: info@creative-biomart.com  Fax: 1-631-938-8127

 45-1 Ramsey Road, Shirley, NY 11967, USA

Storage Reconstituted protein stable at -80°C for 12 months, 4°C for 1 week. Use a manual defrost freezer and avoid repeated freeze-thaw cycles.

Reconstitution Centrifuge tubes before opening. Reconstituting to a concentration more than 100 µg/ml is recommended. Dissolve the lyophilized protein in distilled water.

GENE INFORMATION

Gene Name ICOS inducible T-cell co-stimulator [Homo sapiens]

Official Symbol ICOS

Synonyms ICOS; inducible T-cell co-stimulator; inducible T-cell costimulator; activation inducible lymphocyte immunomediatory molecule; AILIM; CD278; inducible costimulator; activation-inducible lymphocyte immunomediatory molecule; CVID1; MGC39850;

Gene ID 29851

mRNA Refseq NM_012092

Protein Refseq NP_036224

MIM 604558

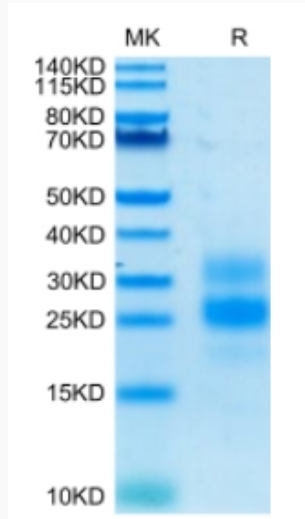
UniProt ID Q9Y6W8

 Tel: 1-631-559-9269 1-516-512-3133

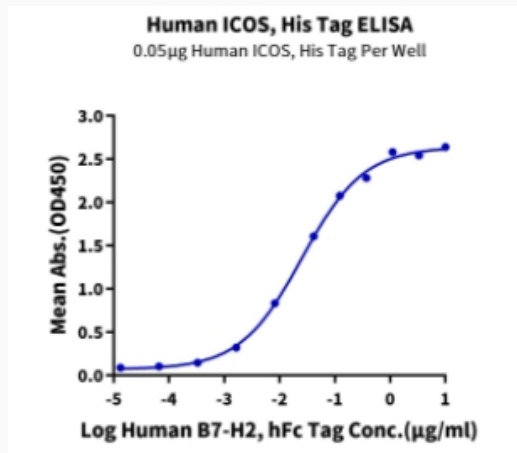
 Email: info@creative-biomart.com  Fax: 1-631-938-8127

 45-1 Ramsey Road, Shirley, NY 11967, USA

Tris-Bis PAGE



ELISA Data



 Tel: 1-631-559-9269 1-516-512-3133

 Email: info@creative-biomart.com  Fax: 1-631-938-8127

 45-1 Ramsey Road, Shirley, NY 11967, USA