

## Recombinant Human ICOS protein, His-tagged

Cat. No. ICOS-6754H Lot. No. (See product label)

### SPECIFICATION

<b>Product Overview</b>	Recombinant Human ICOS protein(Q9Y6W8-1)(Glu21-Phe141(C136S,C137S)), fused with C-terminal His tag, was expressed in HEK293.
<b>Species</b>	Human
<b>Source</b>	HEK293
<b>ProteinLength</b>	Glu21-Phe141(C136S,C137S)
<b>Tag</b>	C-His
<b>Form</b>	Lyophilized from 0.22µm filtered solution in PBS (pH 7.4). Normally 5% trehalose is added as protectant before lyophilization.
<b>Bio-activity</b>	Immobilized Human ICOS (C136S, C137S), His Tag at 5µg/ml (100µl/Well) on the plate. Dose response curve for Human B7-H2, hFc Tag with the EC50 of 5.0ng/ml determined by ELISA.
<b>Molecular Mass</b>	The protein has a predicted MW of 14.8 kDa. Due to glycosylation, the protein migrates to 35-40 kDa based on Tris-Bis PAGE result.
<b>Endotoxin</b>	Less than 1EU per µg by the LAL method.
<b>Purity</b>	> 95% as determined by Tris-Bis PAGE; > 95% as determined by HPLC

 Tel: 1-631-559-9269 1-516-512-3133

 Email: [info@creative-biomart.com](mailto:info@creative-biomart.com)  Fax: 1-631-938-8127

 45-1 Ramsey Road, Shirley, NY 11967, USA

**Storage** Reconstituted protein stable at -80°C for 12 months, 4°C for 1 week. Use a manual defrost freezer and avoid repeated freeze-thaw cycles.

**Reconstitution** Centrifuge tubes before opening. Reconstituting to a concentration more than 100 µg/ml is recommended. Dissolve the lyophilized protein in distilled water.

## GENE INFORMATION

**Gene Name** ICOS inducible T-cell co-stimulator [ Homo sapiens ]

**Official Symbol** ICOS

**Synonyms** ICOS; inducible T-cell co-stimulator; inducible T-cell costimulator; activation inducible lymphocyte immunomediatory molecule; AILIM; CD278; inducible costimulator; activation-inducible lymphocyte immunomediatory molecule; CVID1; MGC39850;

**Gene ID** 29851

**mRNA Refseq** NM\_012092

**Protein Refseq** NP\_036224

**MIM** 604558

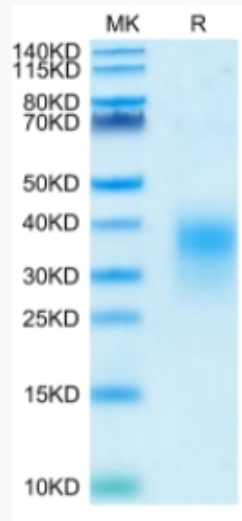
**UniProt ID** Q9Y6W8

 Tel: 1-631-559-9269 1-516-512-3133

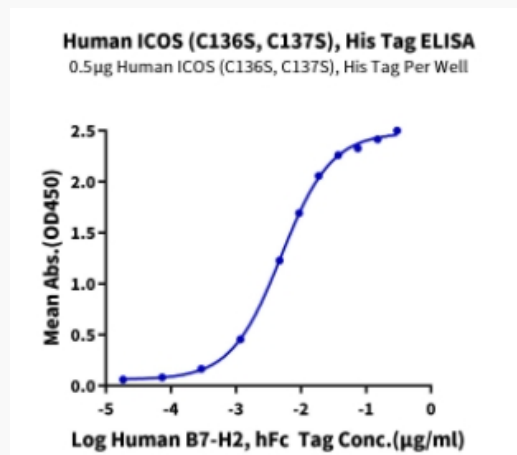
 Email: [info@creative-biomart.com](mailto:info@creative-biomart.com)  Fax: 1-631-938-8127

 45-1 Ramsey Road, Shirley, NY 11967, USA

**Tris-Bis PAGE**



**ELISA Data**



 Tel: 1-631-559-9269 1-516-512-3133

 Email: [info@creative-biomart.com](mailto:info@creative-biomart.com)  Fax: 1-631-938-8127

 45-1 Ramsey Road, Shirley, NY 11967, USA