

Recombinant Human ICOSLG Protein, His-tagged

Cat. No. ICOSLG-039H Lot. No. (See product label)

SPECIFICATION

Product Overview	Recombinant Human ICOSLG Protein with His tag was expressed in E. coli.
Species	Human
Source	E.coli
Description	Ligand for the T-cell-specific cell surface receptor ICOS. Acts as a costimulatory signal for T-cell proliferation and cytokine secretion; induces also B-cell proliferation and differentiation into plasma cells. Could play an important role in mediating local tissue responses to inflammatory conditions, as well as in modulating the secondary immune response by co-stimulating memory T-cell function.
Molecular Mass	~30 kDa
AA Sequence	DTQEKEVRAMVGSDELSCACPEGSRFDLNDVYVYWQTSESKTVVTYHIPQNSSLE NVDSRYRNRALMSPAGMLRGDFSLRLFNVTPQDEQKFHCLVLSQSLGFQEVLVSEV TLHVAANFVSPVVSAPHSPSQDELFTCTTSINGYPRPNVYWINKTDNSLLDQALQND TVFLNMRGLYDVVSVLRIARTPSVNIGCCIEVLLQQNLTVGSQTGNDIGERDKITEN PVSTGEKNAAT
Purity	Transferred into competent cells and the supernatant was purified by NI column affinity chromatography and the purity is > 85% (by SDS-PAGE).
Notes	For research use only, not for use in diagnostic procedure.

 Tel: 1-631-559-9269 1-516-512-3133

 Email: info@creative-biomart.com  Fax: 1-631-938-8127

 45-1 Ramsey Road, Shirley, NY 11967, USA

Storage Store at 4 centigrade short term. Aliquot and store at -20 centigrade long term. Avoid freeze-thaw cycles.

Storage Buffer PBS, 4M Urea, pH7.4

GENE INFORMATION

Gene Name ICOSLG inducible T-cell co-stimulator ligand [Homo sapiens (human)]

Official Symbol ICOSLG

Synonyms ICOSLG; inducible T-cell co-stimulator ligand; ICOSL; ICOS ligand; B7 homolog 2; B7 homologue 2; B7 H2; B7 related protein 1; B7H2; B7RP 1; B7RP1; CD275; GL50; ICOS L; KIAA0653; B7-like protein GI50; B7-related protein 1; transmembrane protein B7-H2 ICOS ligand; B7-H2; LICOS; B7RP-1; ICOS-L;

Gene ID 23308

mRNA Refseq NM_015259


Protein Refseq NP_056074

MIM 605717

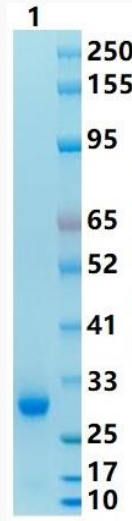
UniProt ID O75144


 Tel: 1-631-559-9269 1-516-512-3133

 Email: info@creative-biomart.com  Fax: 1-631-938-8127


 45-1 Ramsey Road, Shirley, NY 11967, USA

SDS-PAGE



 Tel: 1-631-559-9269 1-516-512-3133

 Email: info@creative-biomart.com  Fax: 1-631-938-8127

 45-1 Ramsey Road, Shirley, NY 11967, USA