

Recombinant Human ICOSLG protein, His-Avi-tagged

Cat. No. ICOSLG-144H Lot. No. (See product label)

SPECIFICATION

Product Overview	Recombinant Human ICOSLG protein(O75144)(Asp19-Ser258), fused with C-terminal His and Avi tag, was expressed in HEK293.
Species	Human
Source	HEK293
ProteinLength	Asp19-Ser258
Tag	C-His-Avi
Form	Lyophilized from 0.22µm filtered solution in PBS (pH 7.4). Normally 5% trehalose is added as protectant before lyophilization.
Bio-activity	Immobilized Human B7-H2, His Tag at 1 µg/ml (100 µl/Well) on the plate. Dose response curve for Human ICOS, hFc Tag with the EC50 of 15.2 ng/ml determined by ELISA.
Molecular Mass	The protein has a predicted MW of 29.5 kDa. Due to glycosylation, the protein migrates to 55-70 kDa based on Tris-Bis PAGE result.
Endotoxin	Less than 1EU per µg by the LAL method.
Purity	> 95% as determined by Tris-Bis PAGE; > 95% as determined by HPLC

 Tel: 1-631-559-9269 1-516-512-3133

 Email: info@creative-biomart.com  Fax: 1-631-938-8127

 45-1 Ramsey Road, Shirley, NY 11967, USA

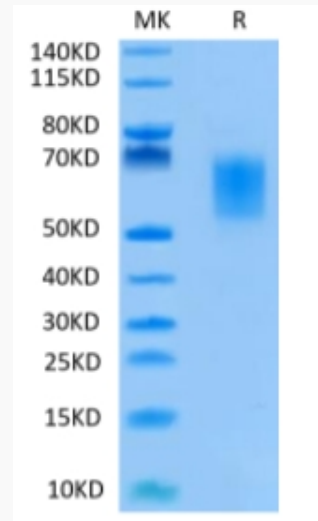
Storage	Reconstituted protein stable at -80°C for 12 months, 4°C for 1 week. Use a manual defrost freezer and avoid repeated freeze-thaw cycles.
Reconstitution	Centrifuge tubes before opening. Reconstituting to a concentration more than 100 µg/ml is recommended. Dissolve the lyophilized protein in distilled water.
GENE INFORMATION	
Gene Name	ICOSLG inducible T-cell co-stimulator ligand [Homo sapiens]
Official Symbol	ICOSLG
Synonyms	ICOSLG; inducible T-cell co-stimulator ligand; ICOSL; ICOS ligand; B7 homolog 2; B7 homologue 2; B7 H2; B7 related protein 1; B7H2; B7RP 1; B7RP1; CD275; GL50; ICOS L; KIAA0653; B7-like protein GI50; B7-related protein 1; transmembrane protein B7-H2 ICOS ligand; B7-H2; LICOS; B7RP-1; ICOS-L;
Gene ID	23308
mRNA Refseq	NM_015259
Protein Refseq	NP_056074
MIM	605717
UniProt ID	O75144

 Tel: 1-631-559-9269 1-516-512-3133

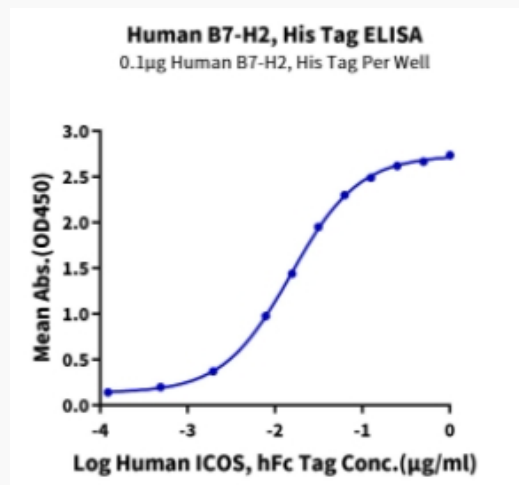
 Email: info@creative-biomart.com  Fax: 1-631-938-8127

 45-1 Ramsey Road, Shirley, NY 11967, USA

Tris-Bis PAGE



ELISA Data



 Tel: 1-631-559-9269 1-516-512-3133

 Email: info@creative-biomart.com  Fax: 1-631-938-8127

 45-1 Ramsey Road, Shirley, NY 11967, USA