

Recombinant Human IDE protein, His-tagged

Cat. No. IDE-117H Lot. No. (See product label)

SPECIFICATION

Product Overview	Recombinant Human IDE protein(P14735)(42-1019 aa), fused with C-terminal His tag, was expressed in Mammalian Cells.
Species	Human
Source	Mammalian Cells
ProteinLength	42-1019 aa
Form	Supplied as a 0.2 µm filtered solution of 20mM Tris-HCl, 150mM NaCl, 0.05% Brij35, 10% Glycerol, pH 7.5.
Molecular Mass	114.25 KDa
Endotoxin	< 1 EU/g as determined by LAL test.
Purity	Greater than 95% as determined by reducing SDS-PAGE.
Storage	Store at ≤-70°C. Please minimize freeze-thaw cycles.
Reconstitution	It is recommended that sterile water be added to the vial to prepare a stock solution of 0.2 g/µl. Centrifuge the vial at 4°C before opening to recover the entire contents.

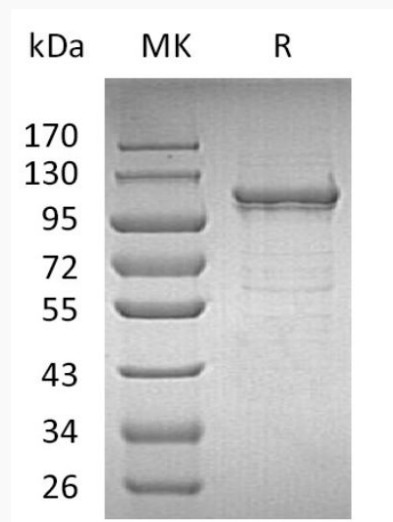
GENE INFORMATION

 Tel: 1-631-559-9269 1-516-512-3133

 Email: info@creative-biomart.com  Fax: 1-631-938-8127

 45-1 Ramsey Road, Shirley, NY 11967, USA

Gene Name	IDE insulin-degrading enzyme [Homo sapiens]
Official Symbol	IDE
Synonyms	IDE; insulin-degrading enzyme; insulysin; insulinase; insulin protease; Abeta-degrading protease; INSULYSIN; FLJ35968
Gene ID	3416
mRNA Refseq	NM_001165946
Protein Refseq	NP_001159418
MIM	146680
UniProt ID	P14735

SDS-PAGE


 Tel: 1-631-559-9269 1-516-512-3133

 Email: info@creative-biomart.com  Fax: 1-631-938-8127

 45-1 Ramsey Road, Shirley, NY 11967, USA