

Recombinant Human IDE protein, His-tagged

Cat. No. IDE-215H Lot. No. (See product label)

SPECIFICATION

Product Overview	Recombinant Human IDE protein(NP_001159418)(676-1019 aa), fused to His tag, was expressed in E. coli.
Species	Human
Source	E.coli
ProteinLength	676-1019 aa
Form	The purified protein was Lyophilized from sterile PBS (58mM Na ₂ HPO ₄ , 17mM NaH ₂ PO ₄ , 68mM NaCl, pH7.). 5 % trehalose and 5 % mannitol are added as protectants before lyophilization.
AA Sequence	EQPHQHAMYLLRLLMTEVAWTKDELKEALDDVTLPRLKAFIPQLLSRLHIEALLHGNI TKQAALGIMQMVEDTLIEHAHTKPLPSQLVRYREVQLPDRGWVYQQRNEVHNNC GIEIYYQTDMMQSTSENMFLELFCQIIEPCFNTLRRTKEQLGYIVFSGPRRANGIQGLRF IIQSEKPPHYLESRVEAFLITMEKSIDMTEEAFQKHIQALAIRRLDKPKKLSAECAY WGEIISQQYNFDRDNTEVAYLKTTLKEDIIFKYKEMLAVDAPRRHKVSVHVLAREMD SCPVVGEFPCQNDINLSQAPALPQPEVIQNMTEFKRGLPLFPLVKPHINFMAAKL
Purity	90%, by SDS-PAGE with Coomassie Brilliant Blue staining.
Storage	Short-term storage: Store at 2-8°C for (1-2 weeks). Long-term storage: Aliquot and store at -20°C to -80°C for up to 3 months, buffer containing 50% glycerol is recommended for reconstitution. Avoid repeat freeze-thaw

 Tel: 1-631-559-9269 1-516-512-3133

 Email: info@creative-biomart.com  Fax: 1-631-938-8127

 45-1 Ramsey Road, Shirley, NY 11967, USA

cycles.

Reconstitution

Reconstitute at 0.25 g/μl in 200 μl sterile water for short-term storage.

Reconstitution with 200 μl 50% glycerol solution is recommended for longer term storage (see Stability and Storage for more details).

If a different concentration is needed for your purposes please adjust the reconstitution volume as required (please note: the ion concentration of the final solution will vary according to the volume used).

Note: Centrifuge vial before opening. When reconstituting, gently pipet and wash down the sides of the vial to ensure full recovery of the protein into solution.

GENE INFORMATION

Gene Name [IDE insulin-degrading enzyme \[Homo sapiens \]](#)

Official Symbol [IDE](#)

Synonyms IDE; insulin-degrading enzyme; insulysin; insulinase; insulin protease; Abeta-degrading protease; INSULYSIN; FLJ35968;

Gene ID [3416](#)

mRNA Refseq [NM_001165946](#)

Protein Refseq [NP_001159418](#)

MIM [146680](#)

UniProt ID [P14735](#)

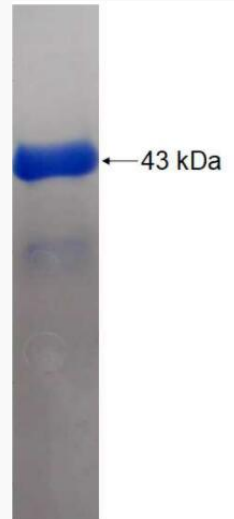
 Tel: 1-631-559-9269 1-516-512-3133

 Email: info@creative-biomart.com  Fax: 1-631-938-8127

 45-1 Ramsey Road, Shirley, NY 11967, USA



SDS-PAGE



Tel: 1-631-559-9269 1-516-512-3133

Email: info@creative-biomart.com Fax: 1-631-938-8127

45-1 Ramsey Road, Shirley, NY 11967, USA