

Recombinant Human Insulin-degrading Enzyme, His-tagged

Cat. No. IDE-255H Lot. No. (See product label)

SPECIFICATION

Product Overview Recombinant Human Insulysin produced in *E. Coli* is a single, non-glycosylated, polypeptide chain containing 990 amino acids (41-1018 a.a.) and having a molecular mass of 108.9 kDa. The Insulysin is fused to a 12 amino acid His-Tag at N-terminus and purified by proprietary chromatographic techniques.

Species Human

Source E.coli

Protein Length 41-1018 a.a.

Description Insulysin is involved in cellular processing of insulin and in intercellular peptide signaling. Insulin-degrading enzyme plays a role in the termination of the insulin response.

Amino Acid Sequence

MHHHHHHAAG IPMNNPAIKR IGNHITKSPE DKREYRGLEL ANGIKVLLIS
 DPTTDKSSAA LDVHIGSLSD PPNIAGLSHF CEHMLFLGTK KYPKENEYSQ
 FLSEHAGSSN AFTSGEHTNY YFDVSHEHLE GALDRFAQFF LCPLFDESCK
 DREVAVDSE HEKNVMNDWA RLFQLEKATG NPKHPFSKFG TGNKYTLETR
 PNQEGIDVRQ ELLKFHSAYY SSNLMAVCVL GRESLDDL TN LVVKLFSEVE
 NKNVPLPEFP EHPFQEEHLK QLYKIVPIKD IRNLYVTTFPI PDLQKYYKSN
 PGHYLGHLIG HEGPGSLLSE LKSKGWVNTL VGGQKEGARG FMFFIINVDL
 TEEGLLHVED IILHMFQYIQ KLRAEGPQEW VFQECKDLNA VAFRFKDKER
 PRGYTSKIAG ILHYYPLEEV LTAEYLLLEEF RPDLIEMVLD KLRPENVRVA

Tel: 1-631-559-9269 1-516-512-3133

Email: info@creative-biomart.com Fax: 1-631-938-8127

45-1 Ramsey Road, Shirley, NY 11967, USA

IVSKSFEGKT DRTEEWYGTQ YKQEAIPEV IKKWQNADLN GKFKLPTKNE
 FIPTNFEILP LEKEATPYPA LIKDTAMSKL WFKQDDKFFL PKACLNFEFF
 SPFAYVDPLH CNMAYLYLEL LKDSLNEYAY AAELAGLSYD LQNTIYGYML
 SVKGYNDKQP ILLKKIIEKM ATFEIDEKRF EIIKEAYMRS LNNFRAEQPH
 QHAMYYLRLM MTEVAWTKDE LKEALDDVTL PRLKAFIPQL LSRLHIEALL
 HGNITKQAAL GIMQMVEDTL IEHAHTKPLL PSQLVRYREV QLPDRGWVY
 QQRNEVHNNC GIEIYYQTDN QSTSENMFLC LFCQIISEPC FNTLRTKEQL
 GYIVFSGPRR ANGIQGLRFI IQSEKPPHYL ESRVEAFLIT MEKSIEDMTE
 EAFQKHIQAL AIRRLDKPKK LSAECAKYWG EIISQQYNFD RDNTEVAYLK
 TLTKEDEIKF YKEMLAVDAP RRHKVSVHVL AREMDSCPVV GEFPCQNDIN
 LSQAPALPQP EVIQNMTEFK RGLPLFPLVK PHINFMAAKL

Physical Appearance Sterile Filtered White lyophilized (freeze-dried) powder.

Formulation Lyophilized with no additives.

Purity Greater than 90.0% as determined by SDS-PAGE.

Solubility It is recommended to reconstitute the lyophilized Insulysin in sterile 18MΩ-cm H₂O not less than 100g/ml, which can then be further diluted to other aqueous solutions.

Stability Lyophilized Insulysin although stable at room temperature for 3 weeks, should be stored desiccated below -18°C. Upon reconstitution Insulysin Recombinant should be stored at 4°C between 2-7 days and for future use below -18°C. For long term storage it is recommended to add a carrier protein (0.1% HSA or BSA). Please prevent freeze-thaw cycles.

GENE INFORMATION

Gene Name IDE insulin-degrading enzyme [Homo sapiens]

 Tel: 1-631-559-9269 1-516-512-3133

 Email: info@creative-biomart.com  Fax: 1-631-938-8127

 45-1 Ramsey Road, Shirley, NY 11967, USA

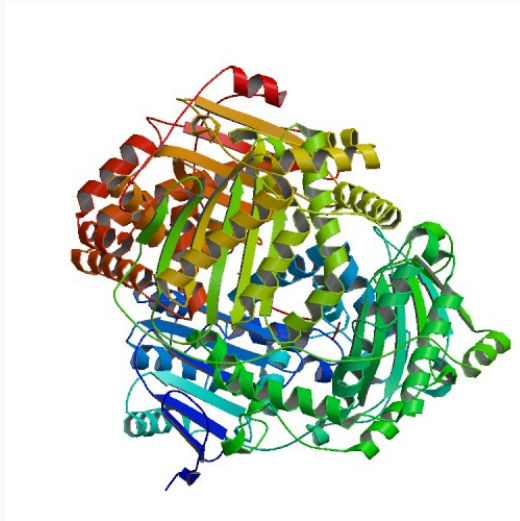
Synonyms	IDE; insulin-degrading enzyme ; FLJ35968; INSULYSIN; insulinase; insulin protease; Abeta-degrading protease; EC 3.4.24.56; OTTHUMP00000020097; Insulysin
Gene ID	3416
mRNA Refseq	NM_001165946
Protein Refseq	NP_001159418
MIM	146680
UniProt ID	P14735
Chromosome Location	10q23-q25
Pathway	Alzheimer"s disease
Function	ATP binding; ATPase activity; beta-endorphin binding; insulin binding; metal ion binding; metalloendopeptidase activity; nucleotide binding; peptidase activity; protein binding; protein homodimerization activity; signal transducer activity; zinc ion binding

 Tel: 1-631-559-9269 1-516-512-3133

 Email: info@creative-biomart.com  Fax: 1-631-938-8127

 45-1 Ramsey Road, Shirley, NY 11967, USA

PDB rendering based
on 2g47.



 Tel: 1-631-559-9269 1-516-512-3133

 Email: info@creative-biomart.com  Fax: 1-631-938-8127

 45-1 Ramsey Road, Shirley, NY 11967, USA