

Recombinant Human IDE Protein (Met42-Leu1019), C-His tagged

Cat. No. IDE-2817H Lot. No. (See product label)

SPECIFICATION

Product Overview	Recombinant human IDE (Met42-Leu1019) protein fused with the C-terminal His tag was expressed in Mammalian cells.
Species	Human
Source	Mammalian Cells
ProteinLength	Met42-Leu1019
Molecular Mass	107.58 kDa
Purity	>90 % as determined by SDS-PAGE.
Notes	For research use only.
Storage	Use a manual defrost freezer and avoid repeated freeze thaw cycles. Store at 2 to 8 centigrade for one week. Store at -20 to -80 centigrade for twelve months from the date of receipt.
Storage Buffer	Supplied as solution form in PBS or lyophilized from PBS.
Reconstitution	Reconstitute in sterile water for a stock solution.
Shipping	In general, proteins are provided as lyophilized powder/frozen liquid. They are

 Tel: 1-631-559-9269 1-516-512-3133

 Email: info@creative-biomart.com  Fax: 1-631-938-8127

 45-1 Ramsey Road, Shirley, NY 11967, USA

shipped out with dry ice/blue ice unless customers require otherwise.

GENE INFORMATION

Gene Name	IDE insulin-degrading enzyme [Homo sapiens (human)]
Official Symbol	IDE
Synonyms	IDE; insulin-degrading enzyme; insulysin; insulinase; insulin protease; Abeta-degrading protease; INSULYSIN; FLJ35968;
Gene ID	3416
mRNA Refseq	NM_001165946
Protein Refseq	NP_001159418
MIM	146680
UniProt ID	P14735

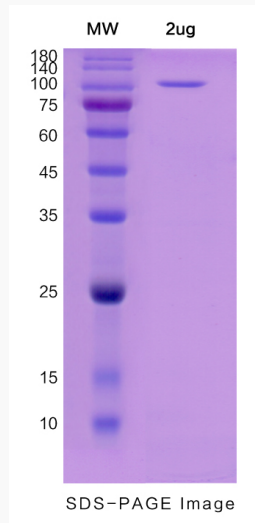
 Tel: 1-631-559-9269 1-516-512-3133

 Email: info@creative-biomart.com  Fax: 1-631-938-8127

 45-1 Ramsey Road, Shirley, NY 11967, USA



SDS-PAGE



Tel: 1-631-559-9269 1-516-512-3133

Email: info@creative-biomart.com Fax: 1-631-938-8127

45-1 Ramsey Road, Shirley, NY 11967, USA