

## Active Recombinant Human IDH1 protein, His-tagged, SEC-HPLC verified

Cat. No. IDH1-2527H Lot. No. (See product label)

### SPECIFICATION

<b>Product Overview</b>	Active Recombinant Human IDH1 protein(Met 1 - Leu 414)(O75874-1), fused with C-terminal His tag, was expressed in E. coli.
<b>Species</b>	Human
<b>Source</b>	E.coli
<b>ProteinLength</b>	Met 1 - Leu 414
<b>Form</b>	Supplied as 0.2 µm filtered solution in 50 mM Tris, 150 mM NaCl, 1 mM TCEP, pH7.5 with glycerol as protectant.
<b>Bio-activity</b>	Measured by the ability to oxidatively decarboxylate isocitrate to 2-oxoglutarate. The specific activity is >10000 pmol/min/µg, as measured under the described conditions.
<b>Molecular Mass</b>	The protein has a calculated MW of 48.5 kDa. The protein migrates as 45-48 kDa under reducing (R) condition (SDS-PAGE).
<b>Endotoxin</b>	Less than 1.0 EU per µg by the LAL method.
<b>Purity</b>	>95% as determined by SDS-PAGE.
<b>Storage</b>	For long term storage, the product should be stored at lyophilized state at -20°C or lower.

 Tel: 1-631-559-9269 1-516-512-3133

 Email: [info@creative-biomart.com](mailto:info@creative-biomart.com)  Fax: 1-631-938-8127

 45-1 Ramsey Road, Shirley, NY 11967, USA

Please avoid repeated freeze-thaw cycles.  
This product is stable after storage at:  
-20°C to -70°C for 12 months in lyophilized state;  
-70°C for 3 months under sterile conditions after reconstitution.

**Reconstitution**

It is recommended that sterile water be added to the vial to prepare a stock solution of 0.2 ug/ul. Centrifuge the vial at 4°C before opening to recover the entire contents.

**GENE INFORMATION**

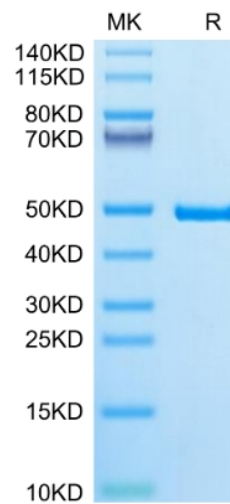
<b>Gene Name</b>	idh1 isocitrate dehydrogenase (NAD+) subunit 1 Idh1 [ Schizosaccharomyces pombe 972h- ]
<b>Official Symbol</b>	IDH1
<b>Synonyms</b>	IDH1; isocitrate dehydrogenase (NAD+) subunit 1 Idh1; EC 1.1.1.41;
<b>Gene ID</b>	2541894
<b>mRNA Refseq</b>	NM_001019820
<b>Protein Refseq</b>	NP_594397

 Tel: 1-631-559-9269 1-516-512-3133

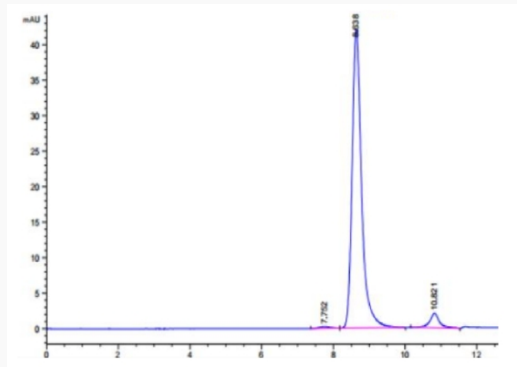
 Email: [info@creative-biomart.com](mailto:info@creative-biomart.com)  Fax: 1-631-938-8127

 45-1 Ramsey Road, Shirley, NY 11967, USA

**Tris-Bis PAGE**



**SEC-HPLC**



 Tel: 1-631-559-9269 1-516-512-3133

 Email: [info@creative-biomart.com](mailto:info@creative-biomart.com)  Fax: 1-631-938-8127

 45-1 Ramsey Road, Shirley, NY 11967, USA