

Recombinant Human IDH1 Protein(1-414aa), His-tagged

Cat. No. IDH1-3029H Lot. No. (See product label)

SPECIFICATION

Product Overview	Recombinant Human IDH1 Protein(1-414aa)(O75874), fused with C-terminal His tag, was expressed in E. coli.
Species	Human
Source	E.coli
ProteinLength	1-414aa
Form	Tris-based buffer, 50% glycerol
Molecular Mass	47.5 kDa
AA Sequence	MSKKISGGSVVEMQGDDEMTRIIWELIKEKLIFPYVELDLHSYDLGIENRDATNDQVTK DAAEAIKKHNVGVKCATITPDEKRVEEFKFKQMWKSPNGTIRNILGGTVFREAIIICKNI PRLVSGWVKPIIIGRHAYGDQYRATDFVVPGPVKVEITYTPSDGTQKVTYLVHNFEE GGGVAMGMYNQDKSIEDFAHSSFQMALSKGWPLYLSTKNTILKKYDGRFKDIFQEIY DKQYKSQFEAQKIWYEHRLIDDMVAQAMKSEGGFIWACKNYDGDVQSDSVAQGYG SLGMMTSVLVCPDGKTVEAAAHGTVTRHYRMYQKGQETSTNPIASIFAWTRGLAH RAKLDNNKELAFFANALEEVSITIEAGFMTKDLAACIKGLPNVQRSDYLNTFEFMDK LGENLKIKLAQAKL
Purity	Greater than 85% as determined by SDS-PAGE.
Storage	Store at -20°C/-80°C upon receipt, aliquoting is necessary for mutiple use. Avoid

Tel: 1-631-559-9269 1-516-512-3133

Email: info@creative-biomart.com Fax: 1-631-938-8127

45-1 Ramsey Road, Shirley, NY 11967, USA

repeated freeze-thaw cycles.

Reconstitution

It is recommended that sterile water be added to the vial to prepare a stock solution of 0.2 ug/ul. Centrifuge the vial at 4°C before opening to recover the entire contents.

GENE INFORMATION

Gene Name

IDH1 isocitrate dehydrogenase 1 (NADP+), soluble [Homo sapiens]

Official Symbol

IDH1

Synonyms

IDH1; isocitrate dehydrogenase 1 (NADP+), soluble; isocitrate dehydrogenase [NADP] cytoplasmic; NADP(+)-specific ICDH; oxalosuccinate decarboxylase; NADP-dependent isocitrate dehydrogenase, cytosolic; NADP-dependent isocitrate dehydrogenase, peroxisomal; IDH; IDP; IDCD; IDPC; PICD;

Gene ID

3417

mRNA Refseq

NM_005896

Protein Refseq

NP_005887

MIM

147700

UniProt ID

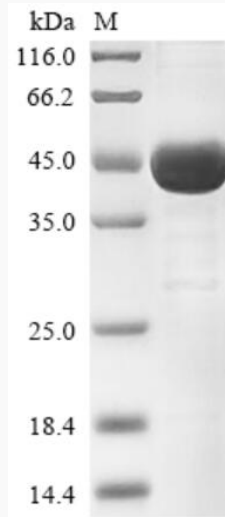
O75874

 Tel: 1-631-559-9269 1-516-512-3133

 Email: info@creative-biomart.com  Fax: 1-631-938-8127

 45-1 Ramsey Road, Shirley, NY 11967, USA

SDS-PAGE



 Tel: 1-631-559-9269 1-516-512-3133

 Email: info@creative-biomart.com  Fax: 1-631-938-8127

 45-1 Ramsey Road, Shirley, NY 11967, USA