

Recombinant Full Length Human IDH2 Protein, C-Flag-tagged

Cat. No. IDH2-1044HFL Lot. No. (See product label)

SPECIFICATION

Product Overview	Recombinant Full Length Human IDH2 Protein, fused to Flag-tag at C-terminus, was expressed in Mammalian cells.
Species	Human
Source	Mammalian Cells
Description	<p>Isocitrate dehydrogenases catalyze the oxidative decarboxylation of isocitrate to 2-oxoglutarate. These enzymes belong to two distinct subclasses, one of which utilizes NAD(+) as the electron acceptor and the other NADP(+). Five isocitrate dehydrogenases have been reported: three NAD(+)-dependent isocitrate dehydrogenases, which localize to the mitochondrial matrix, and two NADP(+)-dependent isocitrate dehydrogenases, one of which is mitochondrial and the other predominantly cytosolic. Each NADP(+)-dependent isozyme is a homodimer. The protein encoded by this gene is the NADP(+)-dependent isocitrate dehydrogenase found in the mitochondria. It plays a role in intermediary metabolism and energy production. This protein may tightly associate or interact with the pyruvate dehydrogenase complex. Alternative splicing results in multiple transcript variants.</p>
Form	25 mM Tris HCl, pH 7.3, 100 mM glycine, 10% glycerol.
Molecular Mass	46.6 kDa
AA Sequence	MAGYLRVVRSLCRASGSRPAWAPAALTAPTSEQPQRHRYADKRIKVAKPVEMDG DEMTRIIWQFIKEKL ILPHVDIQLKYFDLGLPNRDQTDDQVTIDSALATQKYSVAVKC

 Tel: 1-631-559-9269 1-516-512-3133

 Email: info@creative-biomart.com  Fax: 1-631-938-8127

 45-1 Ramsey Road, Shirley, NY 11967, USA

ATITPDEARVEEFKLLKMMWKSPNGTIR NILGGTVFREPIICKNIPRLVPGWTKPITIGR
 HAHGDQYKATDFVADRAGTFKMFVTPKDGSGVKEWEVY NFPAGGVGMGMYNNTD
 ESISGFAHSCFQYAIQKKWPLYMSTKNILKAYDGRFKDIFQEIFDKHYKTDFFDK NKI
 WYEHRLIDDMVAQVLKSSGGFVWACKNYDGDVQSDILAQQFGSLGLMTSVLVCPD
 GKTIEAEEAAHGT VTRHYREHQKGRPTSTNPIASIFAWTRGLEHRGKLDGNQDLIRFA
 QMLEKVCVETVESGAMTKDLAGCIH
 GLSNVKLNEHFLNTTDFLDTIKSNLDRALGRQTRTRPLEQKLISEEDLAANDILDYKD
 DDDKV

Purity	> 80% as determined by SDS-PAGE and Coomassie blue staining.
Stability	Stable for 12 months from the date of receipt of the product under proper storage and handling conditions. Avoid repeated freeze-thaw cycles.
Storage	Store at -80 centigrade.
Concentration	>50 ug/mL as determined by microplate BCA method.
Preparation	Recombinant protein was captured through anti-DDK affinity column followed by conventional chromatography steps.
Protein Pathways	Citrate cycle (TCA cycle), Glutathione metabolism, Metabolic pathways
Full Length	Full L.

GENE INFORMATION

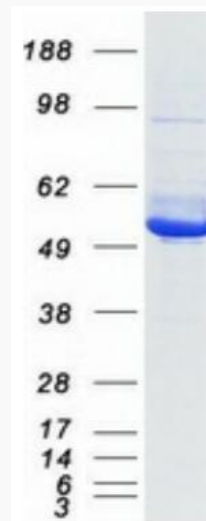
Gene Name	IDH2 isocitrate dehydrogenase (NADP(+)) 2 [Homo sapiens (human)]
Official Symbol	IDH2

 Tel: 1-631-559-9269 1-516-512-3133

 Email: info@creative-biomart.com  Fax: 1-631-938-8127

 45-1 Ramsey Road, Shirley, NY 11967, USA

Synonyms	IDH; IDP; IDHM; IDPM; ICD-M; IDH-2; D2HGA2; mNADP-IDH
Gene ID	3418
mRNA Refseq	NM_002168.4
Protein Refseq	NP_002159.2
MIM	147650
UniProt ID	P48735



Coomassie blue staining of purified IDH2 protein.

 Tel: 1-631-559-9269 1-516-512-3133

 Email: info@creative-biomart.com  Fax: 1-631-938-8127

 45-1 Ramsey Road, Shirley, NY 11967, USA