

Recombinant Full Length Human IDH3A Protein, C-Flag-tagged

Cat. No. IDH3A-1349HFL Lot. No. (See product label)

SPECIFICATION

Product Overview	Recombinant Full Length Human IDH3A Protein, fused to Flag-tag at C-terminus, was expressed in Mammalian cells.
Species	Human
Source	Mammalian Cells
Description	<p>Isocitrate dehydrogenases catalyze the oxidative decarboxylation of isocitrate to 2-oxoglutarate. These enzymes belong to two distinct subclasses, one of which utilizes NAD(+) as the electron acceptor and the other NADP(+). Five isocitrate dehydrogenases have been reported: three NAD(+)-dependent isocitrate dehydrogenases, which localize to the mitochondrial matrix, and two NADP(+)-dependent isocitrate dehydrogenases, one of which is mitochondrial and the other predominantly cytosolic. NAD(+)-dependent isocitrate dehydrogenases catalyze the allosterically regulated rate-limiting step of the tricarboxylic acid cycle. Each isozyme is a heterotetramer that is composed of two alpha subunits, one beta subunit, and one gamma subunit. The protein encoded by this gene is the alpha subunit of one isozyme of NAD(+)-dependent isocitrate dehydrogenase.</p>
Form	25 mM Tris HCl, pH 7.3, 100 mM glycine, 10% glycerol.
Molecular Mass	36.6 kDa
AA Sequence	MAGPAWISKVSRLLGAFHNPKQVTRGFTGGVQTVTLIPGDGIGPEISAAVMKIFDAA KAPIQWEERNVTA IQGPGGKWMIPSEAKESMDKNKMGLKGPLKTPIAAGHPNMNLL

 Tel: 1-631-559-9269 1-516-512-3133

 Email: info@creative-biomart.com  Fax: 1-631-938-8127

 45-1 Ramsey Road, Shirley, NY 11967, USA

LRKTFDLYANVRPCVSIIEGYKTPYTDV NIVTIRENTEGEYSGIEHVIVDGVVQSIKLITE
 GASKRIAFAFEYARNNHRSNVTAVHKANIMRMSDGL FLQKCREVAESCKDIKFNE
 MYLDTVCLNMVQDPSQFDVLMVMPNLYGDILSDLCAGLIGGLGVTPSGNIGA NGVAIF
 ESVHGTAPDIAGKDMANPTALLLSAVMMLRHMGLFDHAARIEAACFATIKDGKSLTK
 DLGGNAK
 CSDFTEEICRRVKDLDRTRTRPLEQKLISEEDLAANDILDYKDDDDKV

Purity	> 80% as determined by SDS-PAGE and Coomassie blue staining.
Stability	Stable for 12 months from the date of receipt of the product under proper storage and handling conditions. Avoid repeated freeze-thaw cycles.
Storage	Store at -80 centigrade.
Concentration	>50 ug/mL as determined by microplate BCA method.
Preparation	Recombinant protein was captured through anti-DDK affinity column followed by conventional chromatography steps.
Protein Pathways	Citrate cycle (TCA cycle), Metabolic pathways
Full Length	Full L.

GENE INFORMATION

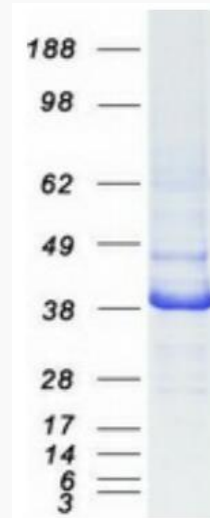
Gene Name	IDH3A isocitrate dehydrogenase (NAD(+)) 3 catalytic subunit alpha [Homo sapiens (human)]
Official Symbol	IDH3A
Synonyms	RP90

 Tel: 1-631-559-9269 1-516-512-3133

 Email: info@creative-biomart.com  Fax: 1-631-938-8127

 45-1 Ramsey Road, Shirley, NY 11967, USA

Gene ID	3419
mRNA Refseq	NM_005530.3
Protein Refseq	NP_005521.1
MIM	601149
UniProt ID	P50213



Coomassie blue staining of purified IDH3A protein.

 Tel: 1-631-559-9269 1-516-512-3133

 Email: info@creative-biomart.com  Fax: 1-631-938-8127

 45-1 Ramsey Road, Shirley, NY 11967, USA