

Active Recombinant Human IDO1 protein, His-tagged

Cat. No. IDO1-008H Lot. No. (See product label)

SPECIFICATION

Product Overview Active recombinant human N-terminal His-tagged IDO1 was expressed in E. coli.

Species Human

Source E.coli

ProteinLength 2-403 (full length)

Description This gene encodes indoleamine 2,3-dioxygenase (IDO) - a heme enzyme that catalyzes the first and rate-limiting step in tryptophan catabolism to N-formyl-kynurenine. This enzyme acts on multiple tryptophan substrates including D-tryptophan, L-tryptophan, 5-hydroxy-tryptophan, tryptamine, and serotonin. This enzyme is thought to play a role in a variety of pathophysiological processes such as antimicrobial and antitumor defense, neuropathology, immunoregulation, and antioxidant activity. Through its expression in dendritic cells, monocytes, and macrophages this enzyme modulates T-cell behavior by its peri-cellular catabolization of the essential amino acid tryptophan.

Form 40 mM Tris-HCl, pH 8.0, with 110 mM sodium chloride, 2.2 mM potassium chloride, and 20% glycerol.

Bio-activity IDO1 activity is measured by incubating with L-Trp substrate. After a three hour roomtemperature incubation, activity is determined by measuring the absorption of reaction product at $\lambda = 320-325$ nm.

 Tel: 1-631-559-9269 1-516-512-3133

 Email: info@creative-biomart.com  Fax: 1-631-938-8127

 45-1 Ramsey Road, Shirley, NY 11967, USA

Molecular Mass	46 kDa
Purity	≥90% estimated by SDS-PAGE
Applications	Enzyme Activity
Stability	≥ 6 months
Storage	-80 centigrade
Shipping	Dry ice in continental US; may vary elsewhere

GENE INFORMATION

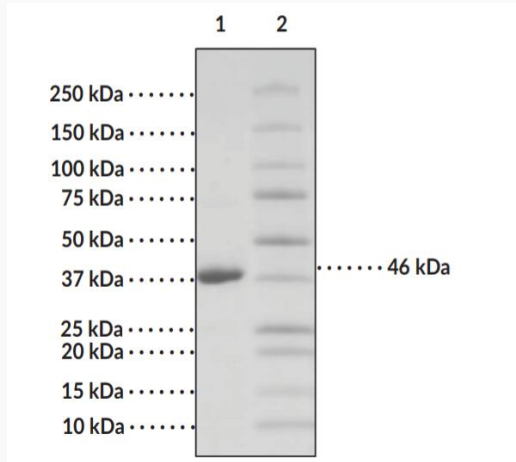
Gene Name	IDO1 indoleamine 2,3-dioxygenase 1 [Homo sapiens (human)]
Official Symbol	IDO1
Synonyms	Indoleamine 2,3-dioxygenase 1 Indoleamine-pyrrole 2,3-dioxygenase
Gene ID	3620
mRNA Refseq	NM_002164
Protein Refseq	NP_002155
MIM	147435
UniProt ID	P14902

 Tel: 1-631-559-9269 1-516-512-3133

 Email: info@creative-biomart.com  Fax: 1-631-938-8127

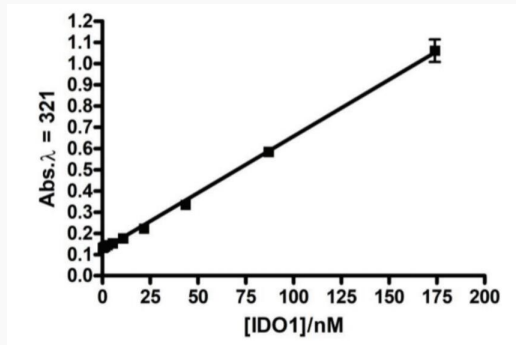
 45-1 Ramsey Road, Shirley, NY 11967, USA

**SDS-PAGE Analysis
of IDO1.**



Representative gel image shown; actual purity may vary between each batch.

IDO1 Specific Activity



 Tel: 1-631-559-9269 1-516-512-3133

 Email: info@creative-biomart.com  Fax: 1-631-938-8127

 45-1 Ramsey Road, Shirley, NY 11967, USA