

## Recombinant Human IDO1 Protein, His/Avi-tagged

Cat. No. IDO1-01H Lot. No. (See product label)

### SPECIFICATION

<b>Product Overview</b>	Human IDO1, also known as Indoleamine 2,3-dioxygenase 1, a.a. 2-403(end) with an N-terminal His-Avi-Tag, was expressed in an E. coli cell expression system.
<b>Species</b>	Human
<b>Source</b>	E.coli
<b>ProteinLength</b>	2-403 a.a.
<b>Description</b>	<p>This gene encodes indoleamine 2,3-dioxygenase (IDO) - a heme enzyme that catalyzes the first and rate-limiting step in tryptophan catabolism to N-formyl-kynurenine. This enzyme acts on multiple tryptophan substrates including D-tryptophan, L-tryptophan, 5-hydroxy-tryptophan, tryptamine, and serotonin. This enzyme is thought to play a role in a variety of pathophysiological processes such as antimicrobial and antitumor defense, neuropathology, immunoregulation, and antioxidant activity. Through its expression in dendritic cells, monocytes, and macrophages this enzyme modulates T-cell behavior by its peri-cellular catabolization of the essential amino acid tryptophan.</p>
<b>Form</b>	Aqueous buffer solution
<b>Molecular Mass</b>	48 kDa
<b>Applications</b>	Useful for studying enzyme kinetics, substrate specificity, and screening inhibitors.

 Tel: 1-631-559-9269 1-516-512-3133

 Email: [info@creative-biomart.com](mailto:info@creative-biomart.com)  Fax: 1-631-938-8127

 45-1 Ramsey Road, Shirley, NY 11967, USA

<b>Stability</b>	At least 6 months at -80 centigrade
<b>Storage</b>	At -80 centigrade
<b>Concentration</b>	1.12 mg/mL
<b>Storage Buffer</b>	40 mM Tris-HCl, pH 8.0, 110 mM NaCl, 2.2 mM KCl, 0.04 % Tween 20, 20 % glycerol

## GENE INFORMATION

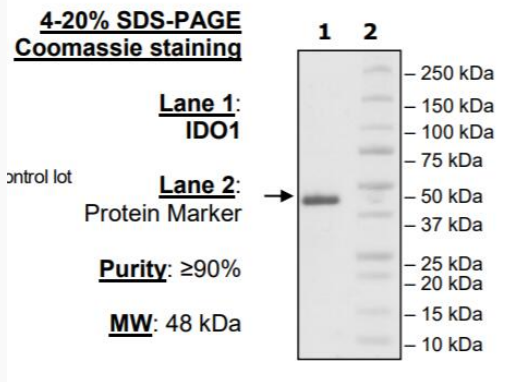
<b>Gene Name</b>	IDO1 indoleamine 2,3-dioxygenase 1 [ Homo sapiens (human) ]
<b>Official Symbol</b>	IDO1
<b>Synonyms</b>	IDO1; indoleamine 2,3-dioxygenase 1; IDO; INDO; IDO-1; indoleamine 2,3-dioxygenase 1; indolamine 2,3 dioxygenase; indole 2,3-dioxygenase; indoleamine-pyrrole 2,3-dioxygenase; EC 1.13.11.52
<b>Gene ID</b>	3620
<b>mRNA Refseq</b>	NM_002164
<b>Protein Refseq</b>	NP_002155
<b>MIM</b>	147435
<b>UniProt ID</b>	P14902
<b>Specific Activity</b>	

 Tel: 1-631-559-9269 1-516-512-3133

 Email: [info@creative-biomart.com](mailto:info@creative-biomart.com)  Fax: 1-631-938-8127

 45-1 Ramsey Road, Shirley, NY 11967, USA

Purity



 Tel: 1-631-559-9269 1-516-512-3133

 Email: [info@creative-biomart.com](mailto:info@creative-biomart.com)  Fax: 1-631-938-8127

 45-1 Ramsey Road, Shirley, NY 11967, USA