

Recombinant Human IDO1 Protein, MYC/DDK-tagged, C13 and N15-labeled

Cat. No. IDO1-085H **Lot. No.** (See product label)

SPECIFICATION

Product Overview	IDO1 MS Standard C13 and N15-labeled recombinant protein (NP_002155) with a C-terminal MYC/DDK tag, was expressed in HEK293 cells.
Species	Human
Source	HEK293
Description	This gene encodes indoleamine 2,3-dioxygenase (IDO) - a heme enzyme that catalyzes the first and rate-limiting step in tryptophan catabolism to N-formyl-kynurenine. This enzyme acts on multiple tryptophan substrates including D-tryptophan, L-tryptophan, 5-hydroxy-tryptophan, tryptamine, and serotonin. This enzyme is thought to play a role in a variety of pathophysiological processes such as antimicrobial and antitumor defense, neuropathology, immunoregulation, and antioxidant activity. Through its expression in dendritic cells, monocytes, and macrophages this enzyme modulates T-cell behavior by its peri-cellular catabolization of the essential amino acid tryptophan.
Molecular Mass	45.3 kDa
AA Sequence	MAHAMENSWTISKEYHIDEEVGFALPNPQENLPDFYNDWWMFIAKHLPDLIESGQLRE RVEKLNMLSIDHLTDHKSQRLARLVLCITMAYVWGKGHGDVVRKVLPRNIAVPYCQL SKKLELPPILVYADCVLANWKKKDPNKPLTYENMDVLFSTRDGDGDCSKGFFLVSLLEI AAASAIKVIPTVFKAMQMQRDTLLKALLEIASCLEKALQVFHQIHDHVNPKAFFSVLR

 Tel: 1-631-559-9269 1-516-512-3133

 Email: info@creative-biomart.com  Fax: 1-631-938-8127

 45-1 Ramsey Road, Shirley, NY 11967, USA



IYLSGWKGNPQLSDGLVYEGFWEDPKEFAGGSAGQSSVFQCFDVLLGIQQTAGGG
HAAQFLQDMRRYMPPAHRNFLCSLESNPSVREFVLSKGDAGLREAYDACVKALVSL
RSYHLQIVTKYILIPASQQPKENKTSKLEAKGTGGTDLNFKLTVRSTTEKSL
KEGTRTRPLEQKLISEEDLAANDILDYKDDDDKV

Purity > 80% as determined by SDS-PAGE and Coomassie blue staining

Stability Stable for 3 months from receipt of products under proper storage and handling conditions.

Storage Store at -80 centigrade. Avoid repeated freeze-thaw cycles.

Concentration 50 µg/mL as determined by BCA

Storage Buffer 100 mM glycine, 25 mM Tris-HCl, pH 7.3.

GENE INFORMATION

Gene Name IDO1 indoleamine 2,3-dioxygenase 1 [Homo sapiens (human)]

Official Symbol IDO1

Synonyms IDO1; indoleamine 2,3-dioxygenase 1; IDO; IDO-1; INDO; indoleamine 2,3-dioxygenase 1; indolamine 2,3 dioxygenase; indole 2,3-dioxygenase; indoleamine-pyrrole 2,3-dioxygenase; EC 1.13.11.52

Gene ID 3620

mRNA Refseq NM_002164

Protein Refseq NP_002155

Tel: 1-631-559-9269 1-516-512-3133

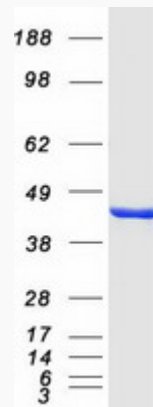
Email: info@creative-biomart.com Fax: 1-631-938-8127

45-1 Ramsey Road, Shirley, NY 11967, USA

MIM 147435

UniProt ID P14902

SDS-PAGE



 Tel: 1-631-559-9269 1-516-512-3133

 Email: info@creative-biomart.com  Fax: 1-631-938-8127

 45-1 Ramsey Road, Shirley, NY 11967, USA