

Recombinant Human IDO1 Protein (Met1-Gly403), N-His tagged

Cat. No. IDO1-3095H Lot. No. (See product label)

SPECIFICATION

Product Overview	Recombinant human IDO1 (Met1-Gly403) protein fused with the N-terminal His tag was expressed in E. coli.
Species	Human
Source	E.coli
ProteinLength	Met1-Gly403
Molecular Mass	47.62 kDa
Purity	>90 % as determined by SDS-PAGE.
Notes	For research use only.
Storage	Use a manual defrost freezer and avoid repeated freeze thaw cycles. Store at 2 to 8 centigrade for one week. Store at -20 to -80 centigrade for twelve months from the date of receipt.
Storage Buffer	Supplied as solution form in PBS pH 7.5 or lyophilized from PBS pH 7.5.
Reconstitution	Reconstitute in sterile water for a stock solution.
Shipping	In general, proteins are provided as lyophilized powder/frozen liquid. They are shipped out with dry ice/blue ice unless customers require otherwise.

 Tel: 1-631-559-9269 1-516-512-3133

 Email: info@creative-biomart.com  Fax: 1-631-938-8127

 45-1 Ramsey Road, Shirley, NY 11967, USA

GENE INFORMATION

Gene Name IDO1 indoleamine 2,3-dioxygenase 1 [Homo sapiens (human)]

Official Symbol IDO1

Synonyms IDO1; indoleamine 2,3-dioxygenase 1; IDO, INDO, indoleamine pyrrole 2,3 dioxygenase; indole 2,3-dioxygenase; indolamine 2,3 dioxygenase; indoleamine-pyrrole 2,3-dioxygenase; IDO; INDO; IDO-1;

Gene ID 3620

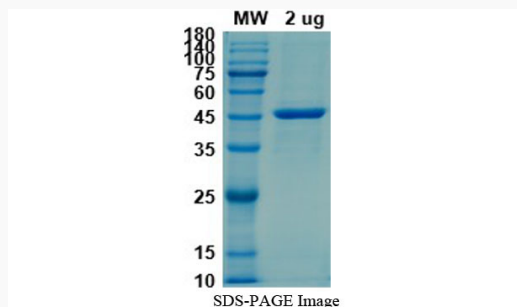
mRNA Refseq NM_002164

Protein Refseq NP_002155

MIM 147435

UniProt ID P14902

SDS-PAGE



Tel: 1-631-559-9269 1-516-512-3133

Email: info@creative-biomart.com Fax: 1-631-938-8127

45-1 Ramsey Road, Shirley, NY 11967, USA