

## Recombinant Human IDO2 Protein (14-420 aa), His-tagged

Cat. No. IDO2-1420H Lot. No. (See product label)

### SPECIFICATION

**Product Overview** Recombinant Human IDO2 Protein (14-420 aa) is produced by Yeast expression system. This protein is fused with a 6xHis tag at the N-terminal. Research Area: Metabolism. Protein Description: Partial.

**Species** Human

**Source** Yeast

**ProteinLength** 14-420 aa

**Description** Catalyzes the first and rate-limiting step in the kynurenine pathway of tryptophan catabolism.

**Form** Tris-based buffer, 50% glycerol

**Molecular Mass** 47.4 kDa

**AA Sequence**

```
MEPHRPNVKTAVPLSLESYHISEEYGFLLPDSLKELPDHYRPWMEIANKLPQLIDAH
QLQAHVDKMPLLSCQFLKGHREQRLAHLVLSFLTMGYVWQEGEAQPAEVLPRNLA
LPFVEVSRNLGLPPILVHSDLVLTNWTKKDPDGFLEIGNLETIISFPGGESLHGFIIVTA
LVEKEAVPGIKALVQATNAILQPNQEALLQALQRLRLSIQDITKTLGQMHDYVDPDIFY
AGIRIFLSGWKDNPAMPAGLMYEGVSQEPLKYSGGSAQSTVLHAFDEFGLGIRHRSK
ESGDFLYRMRDYMPPSHKAFIEDIHSAPSLRDYILSSGQDHLTAYNQCVQALAEELR
SYHITMVTKYLITAAAKAKHKGKPNHLPQALQKDRGTGGTAVMSFLKSVRDKTLESIL
HPRG
```

 Tel: 1-631-559-9269 1-516-512-3133

 Email: [info@creative-biomart.com](mailto:info@creative-biomart.com)  Fax: 1-631-938-8127

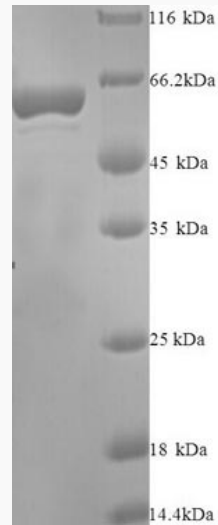
 45-1 Ramsey Road, Shirley, NY 11967, USA

<b>Purity</b>	> 90% as determined by SDS-PAGE.
<b>Notes</b>	Repeated freezing and thawing is not recommended. Store working aliquots at 4 centigrade for up to one week.
<b>Storage</b>	The shelf life is related to many factors, storage state, buffer ingredients, storage temperature and the stability of the protein itself. Generally, the shelf life of liquid form is 6 months at -20 centigrade/-80 centigrade. The shelf life of lyophilized form is 12 months at -20 centigrade/-80 centigrade.
<b>Concentration</b>	A hardcopy of COA with reconstitution instruction is sent along with the products.
<b>GENE INFORMATION</b>	
<b>Gene Name</b>	IDO2 indoleamine 2,3-dioxygenase 2 [ Homo sapiens ]
<b>Official Symbol</b>	IDO2
<b>Synonyms</b>	IDO2; IDO-2; INDOL1;
<b>Gene ID</b>	169355
<b>mRNA Refseq</b>	NM_194294
<b>Protein Refseq</b>	NP_919270
<b>MIM</b>	612129
<b>UniProt ID</b>	Q6ZQW0

 Tel: 1-631-559-9269 1-516-512-3133

 Email: [info@creative-biomart.com](mailto:info@creative-biomart.com)  Fax: 1-631-938-8127

 45-1 Ramsey Road, Shirley, NY 11967, USA



(Tris-Glycine gel) Discontinuous SDS-PAGE (reduced) with 5% enrichment gel and 15% separation gel.

 Tel: 1-631-559-9269 1-516-512-3133

 Email: [info@creative-biomart.com](mailto:info@creative-biomart.com)  Fax: 1-631-938-8127

 45-1 Ramsey Road, Shirley, NY 11967, USA