

Recombinant Human IDO2 protein, His-tagged

Cat. No. IDO2-2547H Lot. No. (See product label)

SPECIFICATION

Product Overview	Recombinant Human IDO2 protein(268-420 aa), fused with N-terminal His tag, was expressed in E. coli.
Species	Human
Source	E. coli
ProteinLength	268-420 aa
Form	The purified protein was lyophilized from sterile phosphate-buffered saline (PBS: 58 mM Na ₂ HPO ₄ , 17 mM NaH ₂ PO ₄ , 68 mM NaCl, pH 7.4). Prior to lyophilization, 5% (w/v) trehalose and 5% (w/v) mannitol were incorporated as cryoprotective excipients. The protein was eluted with a buffer containing 300 mM imidazole.
AASequence	GVSQEPLKYSGGSAAQSTVLHAFDEFGLGIRHSGESGDFLYRMRDYMPPSHKAFIEDI HSAPSLRDYILSSGQDHLITAYNQCVQALAE LRSYHITMVT KYLITAAAKAKHGKPNH LPGPPQALKDRGTGGTAVMSFLKSVRDKTLESILHPRG
Purity	85%, by SDS-PAGE.
Storage	Store at 2-8°C for 1-2 weeks. Aliquot and store at -20°C to -80°C for up to 3 months, reconstitution with sterile water and addition of an equal volume of glycerol. Avoid repeat freeze-thaw cycles.
Reconstitution	It is recommended that sterile water be added to the vial to prepare a stock solution of

 Tel: 1-631-559-9269 1-516-512-3133

 Email: info@creative-biomart.com  Fax: 1-631-938-8127

 45-1 Ramsey Road, Shirley, NY 11967, USA

0.25 ug/ul. Centrifuge the vial at 4°C before opening to recover the entire contents.

GENE INFORMATION

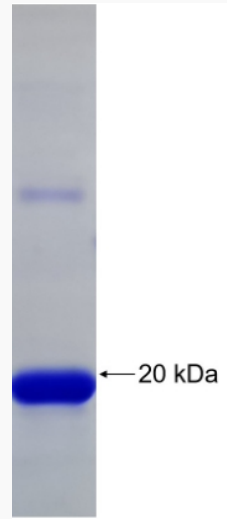
Gene Name	IDO2 indoleamine 2,3-dioxygenase 2 [Homo sapiens]
Official Symbol	IDO2
Synonyms	IDO2; indoleamine 2,3-dioxygenase 2; INDOL1, indoleamine pyrrole 2,3 dioxygenase like 1; IDO-2; indoleamine 2,3-dioxygenase-like 1 protein; indoleamine 2,3-dioxygenase-like protein 1; indoleamine-pyrrole 2,3 dioxygenase-like 1; indoleamine-pyrrole 2,3-dioxygenase-like protein 1; INDOL1;
mRNA Refseq	NM_194294
Protein Refseq	NP_919270
MIM	612129
UniProt ID	Q6ZQW0
Gene ID	169355

 Tel: 1-631-559-9269 1-516-512-3133

 Email: info@creative-biomart.com  Fax: 1-631-938-8127

 45-1 Ramsey Road, Shirley, NY 11967, USA

SDS-PAGE



 Tel: 1-631-559-9269 1-516-512-3133

 Email: info@creative-biomart.com  Fax: 1-631-938-8127

 45-1 Ramsey Road, Shirley, NY 11967, USA