

Recombinant Human IDO2 Protein (Met14-Gly420), N-His and N-SUMO tagged

Cat. No. IDO2-3702H Lot. No. (See product label)

SPECIFICATION

Product Overview	Recombinant human IDO2/INDOL1 (Met14-Gly420) protein fused with the N-His & N-SUMO tag was expressed in E. coli.
Species	Human
Source	E.coli
ProteinLength	Met14-Gly420
Molecular Mass	58.23 kDa
Purity	>90 % as determined by SDS-PAGE.
Notes	For research use only.
Storage	Use a manual defrost freezer and avoid repeated freeze thaw cycles. Store at 2 to 8 centigrade for one week. Store at -20 to -80 centigrade for twelve months from the date of receipt.
Storage Buffer	0.01M PBS, pH 7.4, 0.02 % NLS
Reconstitution	Reconstitute in sterile water for a stock solution.
Shipping	In general, proteins are provided as lyophilized powder/frozen liquid. They are

 Tel: 1-631-559-9269 1-516-512-3133

 Email: info@creative-biomart.com  Fax: 1-631-938-8127

 45-1 Ramsey Road, Shirley, NY 11967, USA

shipped out with dry ice/blue ice unless customers require otherwise.

GENE INFORMATION

Gene Name IDO2 indoleamine 2,3-dioxygenase 2 [Homo sapiens (human)]

Official Symbol IDO2

Synonyms IDO2; indoleamine 2,3-dioxygenase 2; INDOL1, indoleamine pyrrole 2,3 dioxygenase like 1; IDO-2; indoleamine 2,3-dioxygenase-like 1 protein; indoleamine 2,3-dioxygenase-like protein 1; indoleamine-pyrrole 2,3 dioxygenase-like 1; indoleamine-pyrrole 2,3-dioxygenase-like protein 1; INDOL1;

Gene ID 169355

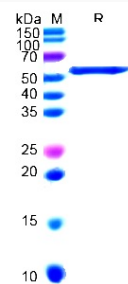
mRNA Refseq NM_194294

Protein Refseq NP_919270

MIM 612129

UniProt ID Q6ZQW0

SDS-PAGE



 Tel: 1-631-559-9269 1-516-512-3133

 Email: info@creative-biomart.com  Fax: 1-631-938-8127

 45-1 Ramsey Road, Shirley, NY 11967, USA