

# Recombinant Human IDO2 Protein, Myc/DDK-tagged, C13 and N15-labeled

**Cat. No.** IDO2-5968H    **Lot. No.** (See product label)

## SPECIFICATION

<b>Product Overview</b>	IDO2 MS Standard C13 and N15-labeled recombinant protein (NP_919270) with a C-terminal MYC/DDK tag, was expressed in HEK293 cells.
<b>Species</b>	Human
<b>Source</b>	HEK293
<b>Description</b>	Along with the enzymes encoded by the INDO and TDO2 genes, the enzyme encoded by the INDOL1 gene metabolizes tryptophan in the kynurenine pathway.
<b>Molecular Mass</b>	46.9 kDa
<b>AA Sequence</b>	<p>MLHFHYDYDTSNKIMEPHRPNVKTAVPLSLESYHISEEYGFLLPDSLKELPDHYRPWM            EIANKLPQLIDAHQLQAHVDKMPDLLSCQFLKGHREQRLAHLVLSFLTMGYVWQEGE            AQPAEVLPRNLALPFVEVSRNLGLPPILVHSDLVLTNWTKKDPDGFLEIGNLETIISFP            GGESLHGFIIVTALVEKEAVPGIKALVQATNAILQPNQEALLQALQRLRLSIQDITKTL            GQMHDYVDPDIFYAGIRIFLSGWKDNPAMPAGLMYEGVSQEPLKYSGGSAAQSTVL            HAFDEFLGIRHSKESGDFLYRMRDYMPPSHKAFIEDIHSAPSLRDYILSSGQDHLTA            YNQCQVQALAEALRSYHITMVTKYLITAAAKAKHKGKPNHLPGPPQALKDRGTGGTAVM            SFLKSVRDKTLESILHPRGTRTRPLEQKLISEEDLAANDILDYKDDDDKV</p>
<b>Purity</b>	> 80% as determined by SDS-PAGE and Coomassie blue staining
<b>Stability</b>	Stable for 3 months from receipt of products under proper storage and handling

 Tel: 1-631-559-9269    1-516-512-3133

 Email: [info@creative-biomart.com](mailto:info@creative-biomart.com)     Fax: 1-631-938-8127

 45-1 Ramsey Road, Shirley, NY 11967, USA

conditions.

**Storage** Store at -80 centigrade. Avoid repeated freeze-thaw cycles.

**Concentration** 50 µg/mL as determined by BCA

**Storage Buffer** 100 mM glycine, 25 mM Tris-HCl, pH 7.3.

## GENE INFORMATION

**Gene Name** IDO2 indoleamine 2,3-dioxygenase 2 [ Homo sapiens (human) ]

**Official Symbol** IDO2

**Synonyms** IDO2; indoleamine 2,3-dioxygenase 2; INDOL1, indoleamine pyrrole 2,3 dioxygenase like 1; IDO-2; indoleamine 2,3-dioxygenase-like 1 protein; indoleamine 2,3-dioxygenase-like protein 1; indoleamine-pyrrole 2,3 dioxygenase-like 1; indoleamine-pyrrole 2,3-dioxygenase-like protein 1; INDOL1;

**Gene ID** 169355

**mRNA Refseq** NM\_194294

**Protein Refseq** NP\_919270

**MIM** 612129

**UniProt ID** Q6ZQW0

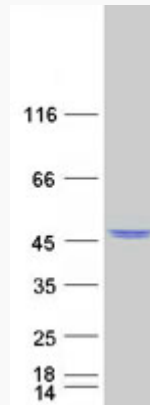
 Tel: 1-631-559-9269 1-516-512-3133

 Email: [info@creative-biomart.com](mailto:info@creative-biomart.com)  Fax: 1-631-938-8127

 45-1 Ramsey Road, Shirley, NY 11967, USA



SDS-PAGE



Tel: 1-631-559-9269 1-516-512-3133

Email: [info@creative-biomart.com](mailto:info@creative-biomart.com) Fax: 1-631-938-8127

45-1 Ramsey Road, Shirley, NY 11967, USA