

Active Recombinant Human IDS Protein, His-tagged

Cat. No. IDS-017H Lot. No. (See product label)

SPECIFICATION

Product Overview	Active recombinant human C-terminal His-tagged IDS protein (26-550) was expressed in HEK293 cells.
Species	Human
Source	HEK293
ProteinLength	26-550
Description	This gene encodes a member of the sulfatase family of proteins. The encoded preproprotein is proteolytically processed to generate two polypeptide chains. This enzyme is involved in the lysosomal degradation of heparan sulfate and dermatan sulfate. Mutations in this gene are associated with the X-linked lysosomal storage disease mucopolysaccharidosis type II, also known as Hunter syndrome. Alternative splicing results in multiple transcript variants, at least one of which encodes a preproprotein that is proteolytically processed.
Form	Lyophilized
Bio-activity	Measured by its ability to hydrolyze the substrate 4-nitrocatechol sulfate (PNCS). The specific activity is > 1.0 pmoles/min/ µg.
Molecular Mass	61 kDa
Endotoxin	<1.0 EU/ µg, determined by the LAL endotoxin assay.

 Tel: 1-631-559-9269 1-516-512-3133

 Email: info@creative-biomart.com  Fax: 1-631-938-8127

 45-1 Ramsey Road, Shirley, NY 11967, USA

Purity	≥87% estimated by SDS-PAGE
Stability	≥ 2 years
Storage	At -80 centigrade.
Storage Buffer	Sterile PBS, pH 7.4

GENE INFORMATION

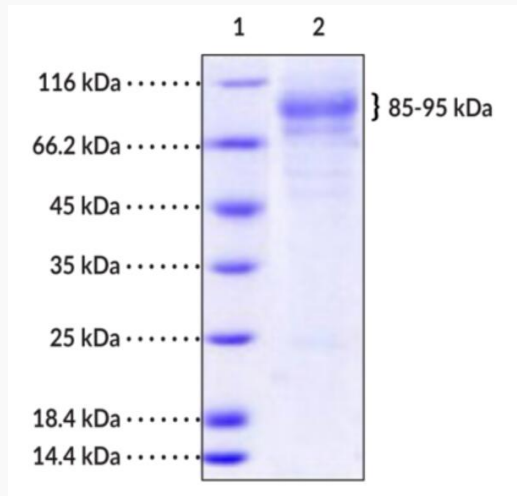
Gene Name	IDS iduronate 2-sulfatase [Homo sapiens (human)]
Official Symbol	IDS
Synonyms	IDS; iduronate 2-sulfatase; ID2S; MPS2; SIDS; iduronate 2-sulfatase; alpha-L-iduronate sulfate sulfatase; iduronate 2-sulfatase 14 kDa chain; iduronate 2-sulfatase 42 kDa chain; idursulfase; EC 3.1.6.13
Gene ID	3423
mRNA Refseq	NM_000202
Protein Refseq	NP_000193
MIM	300823
UniProt ID	P22304

 Tel: 1-631-559-9269 1-516-512-3133

 Email: info@creative-biomart.com  Fax: 1-631-938-8127

 45-1 Ramsey Road, Shirley, NY 11967, USA

SDS-PAGE Analysis of IDS



Lane 1: MW Markers

Lane 2: IDS

This protein has a calculated molecular weight of 61 kDa. It has an apparent molecular weight of approximately 85-95 kDa by SDS-PAGE under reducing conditions due to glycosylation.

Tel: 1-631-559-9269 1-516-512-3133

Email: info@creative-biomart.com Fax: 1-631-938-8127

45-1 Ramsey Road, Shirley, NY 11967, USA