

# Recombinant Human IFI30 Protein, Myc/DDK-tagged, C13 and N15-labeled

**Cat. No.** IFI30-755H    **Lot. No.** (See product label)

## SPECIFICATION

<b>Product Overview</b>	IFI30 MS Standard C13 and N15-labeled recombinant protein (NP_006323) with a C-terminal MYC/DDK tag, was expressed in HEK293 cells.
<b>Species</b>	Human
<b>Source</b>	HEK293
<b>Description</b>	The protein encoded by this gene is a lysosomal thiol reductase that at low pH can reduce protein disulfide bonds. The enzyme is expressed constitutively in antigen-presenting cells and induced by gamma-interferon in other cell types. This enzyme has an important role in MHC class II-restricted antigen processing.
<b>Molecular Mass</b>	28 kDa
<b>AA Sequence</b>	MTLSPLLLFLPPLLLLLDVPTAAVQASPLQALDFFGNGPPVNYKTGNLYLRGPLKKSNA APLVNVTLYYEALCGGCRAFLIRELFPTWLLVMEILNVTLVPYGNAAEQNVSGRWEF KCQHGEEECKFNKVEACVLDELDMELAFITVCMEEFEDMERSLPLCLQLYAPGLSP DTIMECAMGDRGMQLMHANAQRDQALQPPHEYVPWVTVNGKPLEDQTQLLTLVCQ LYQGKKPDVCPSSSTSLRSVCFKTRTRPLEQKLISEEDLAANDILDYKDDDDKV
<b>Purity</b>	> 80% as determined by SDS-PAGE and Coomassie blue staining
<b>Stability</b>	Stable for 3 months from receipt of products under proper storage and handling conditions.

 Tel: 1-631-559-9269    1-516-512-3133

 Email: [info@creative-biomart.com](mailto:info@creative-biomart.com)     Fax: 1-631-938-8127

 45-1 Ramsey Road, Shirley, NY 11967, USA

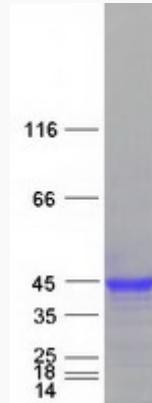
<b>Storage</b>	Store at -80 centigrade. Avoid repeated freeze-thaw cycles.
<b>Concentration</b>	50 µg/mL as determined by BCA
<b>Storage Buffer</b>	100 mM glycine, 25 mM Tris-HCl, pH 7.3.
<b>GENE INFORMATION</b>	
<b>Gene Name</b>	IFI30 IFI30 lysosomal thiol reductase [ Homo sapiens (human) ]
<b>Official Symbol</b>	IFI30
<b>Synonyms</b>	IFI30; interferon, gamma-inducible protein 30; GILT; IP30; IFI-30; gamma-interferon-inducible lysosomal thiol reductase; legumaturain; gamma-interferon-inducible protein IP-30; interferon gamma-inducible protein 30 preproprotein; MGC32056; EC 1.8; Legumaturain
<b>Gene ID</b>	10437
<b>mRNA Refseq</b>	NM_006332
<b>Protein Refseq</b>	NP_006323
<b>MIM</b>	604664
<b>UniProt ID</b>	P13284

 Tel: 1-631-559-9269 1-516-512-3133

 Email: [info@creative-biomart.com](mailto:info@creative-biomart.com)  Fax: 1-631-938-8127

 45-1 Ramsey Road, Shirley, NY 11967, USA

**SDS-PAGE**



 Tel: 1-631-559-9269 1-516-512-3133

 Email: [info@creative-biomart.com](mailto:info@creative-biomart.com)  Fax: 1-631-938-8127

 45-1 Ramsey Road, Shirley, NY 11967, USA