

Recombinant Human IFI30 protein, His-tagged

Cat. No. IFI30-7855H Lot. No. (See product label)

SPECIFICATION

Product Overview	Recombinant Human IFI30 protein(P13284)(1-232aa), fused with C-terminal His tag, was expressed in HEK293.
Species	Human
Source	HEK293
ProteinLength	1-232aa
Tag	C-His
Form	If the delivery form is liquid, the default storage buffer is Tris/PBS-based buffer, 5%-50% glycerol. If the delivery form is lyophilized powder, the buffer before lyophilization is Tris/PBS-based buffer, 6% Trehalose, pH 8.0.
Molecular Mass	27.4 kDa
Purity	Greater than 90% as determined by SDS-PAGE. Greater than 90% as determined by SEC-HPLC.
Storage	Store at -20°C/-80°C upon receipt, aliquoting is necessary for mutiple use. Avoid repeated freeze-thaw cycles.
Reconstitution	We recommend that this vial be briefly centrifuged prior to opening to bring the contents to the bottom. Please reconstitute protein in deionized sterile water to a

 Tel: 1-631-559-9269 1-516-512-3133

 Email: info@creative-biomart.com  Fax: 1-631-938-8127

 45-1 Ramsey Road, Shirley, NY 11967, USA

concentration of 0.1-1.0 mg/mL. We recommend to add 5-50% of glycerol (final concentration) and aliquot for long-term storage at -20°C/-80°C.

AA Sequence

```

MTLSPLLLFLPPLLLLLDVPTAAVQASPLQALDFFGNGPPVNYKTGNLYLRGPLKKS
NAPLVNVTLYYEALCGGCRAFLIRELFPWLLVMEILNVTLVPYGNAAEQNVSGRWEF
KCQHGEEECKFNKVEACVLDLDMELAFITVCMEEFEDMERSLPLCLQLYAPGLSP
DTIMECAMGDRGMQLMHANAQRDALQPPHEYVPWVTVNGKPLEDQTQLLTLVCQ
LYQGK
    
```

GENE INFORMATION

Gene Name [IFI30 interferon, gamma-inducible protein 30 \[Homo sapiens \]](#)

Official Symbol [IFI30](#)

Synonyms IFI30; interferon, gamma-inducible protein 30; GILT; IP30; IFI-30; gamma-interferon-inducible lysosomal thiol reductase; legumaturain; gamma-interferon-inducible protein IP-30; interferon gamma-inducible protein 30 preproprotein; MGC32056; EC 1.8; Legumaturain

Gene ID [10437](#)

mRNA Refseq [NM_006332](#)

Protein Refseq [NP_006323](#)

MIM [604664](#)

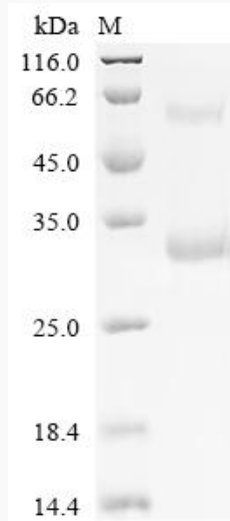
UniProt ID [P13284](#)

 Tel: 1-631-559-9269 1-516-512-3133

 Email: info@creative-biomart.com  Fax: 1-631-938-8127

 45-1 Ramsey Road, Shirley, NY 11967, USA

SDS-PAGE



 Tel: 1-631-559-9269 1-516-512-3133

 Email: info@creative-biomart.com  Fax: 1-631-938-8127

 45-1 Ramsey Road, Shirley, NY 11967, USA