

Recombinant Full Length Human IFI35 Protein, C-Flag-tagged

Cat. No. IFI35-2010HFL Lot. No. (See product label)

SPECIFICATION

Product Overview	Recombinant Full Length Human IFI35 Protein, fused to Flag-tag at C-terminus, was expressed in Mammalian cells.
Species	Human
Source	Mammalian Cells
Description	Enables identical protein binding activity. Involved in several processes, including macrophage activation involved in immune response; positive regulation of defense response; and regulation of signal transduction. Located in several cellular components, including cytosol; extracellular space; and nucleus.
Form	25 mM Tris HCl, pH 7.3, 100 mM glycine, 10% glycerol.
Molecular Mass	31.6 kDa
AA Sequence	MSAPLDAALHALQEEQARLKMRLWDLQQLRKELGDSPKDKVPFVSPKIPLVFRGHT QQDPEVPKSLVSNL RIHCPLLAGSALITFDDPKVAEQVLQQKEHTINMEECRLRVQV QPLELPMVTTIQVMVSSQLSGRRVLVT GFPASLRLSEEEELLDKLEIFFGKTRNGGGD VDVRELLPGSVMLGFARDGVAQRLCQIGQFTVPLGGQQVP LRVSPYVNGEIQKAEI RSQPVPRSVLVLNIPDILDGPELHDVLEIHFQKPTRGGGEVEALTVPQGGQQGL AVF TSESG TRTRPLEQKLISEEDLAANDILDYKDDDDKV
Purity	> 80% as determined by SDS-PAGE and Coomassie blue staining.

 Tel: 1-631-559-9269 1-516-512-3133

 Email: info@creative-biomart.com  Fax: 1-631-938-8127

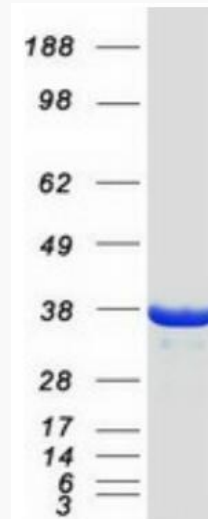
 45-1 Ramsey Road, Shirley, NY 11967, USA

Stability	Stable for 12 months from the date of receipt of the product under proper storage and handling conditions. Avoid repeated freeze-thaw cycles.
Storage	Store at -80 centigrade.
Concentration	>50 ug/mL as determined by microplate BCA method.
Preparation	Recombinant protein was captured through anti-DDK affinity column followed by conventional chromatography steps.
Full Length	Full L.
GENE INFORMATION	
Gene Name	IFI35 interferon induced protein 35 [Homo sapiens (human)]
Official Symbol	IFI35
Synonyms	IFP35
Gene ID	3430
mRNA Refseq	NM_005533.5
Protein Refseq	NP_005524.2
MIM	600735
UniProt ID	P80217

 Tel: 1-631-559-9269 1-516-512-3133

 Email: info@creative-biomart.com  Fax: 1-631-938-8127

 45-1 Ramsey Road, Shirley, NY 11967, USA



Coomassie blue staining of purified IFI35 protein.

 Tel: 1-631-559-9269 1-516-512-3133

 Email: info@creative-biomart.com  Fax: 1-631-938-8127

 45-1 Ramsey Road, Shirley, NY 11967, USA