

Recombinant Human IFI35 Protein, Myc/DDK-tagged, C13 and N15-labeled

Cat. No. IFI35-5254H **Lot. No.** (See product label)

SPECIFICATION

| | |
|-------------------------|--|
| Product Overview | IFI35 MS Standard C13 and N15-labeled recombinant protein (NP_005524) with a C-terminal MYC/DDK tag, was expressed in HEK293 cells. |
| Species | Human |
| Source | HEK293 |
| Description | Not yet known. |
| Molecular Mass | 31.7 kDa |
| AA Sequence | MSAPLDAALHALQEEQARLKMRLWDLQQLRKELGDSPKDKVPFSVPKIPLVFRGHT QQDPEVPKSLVSNLRIHCPLLAGSALITFDDPKVAEQVLQQKEHTINMEECRLRVQV QPLELPMVTTIQVMVSSQLSGRRVLVTGFASLRLSEEELLDKLEIFFGKTRNGGGD VDVRELLPGSVMLGFARDGVAQRLCQIGQFTVPLGGQQVPLRVSPYVNGEIQKAEI RSQPVPRSVLVLNIPDILDGPELHDVLEIHFQKPTRGGGEVEALTVVPQQGQGLAVF TSESGTRTRPLEQKLISEEDLAANDILDYKDDDDKV |
| Purity | > 80% as determined by SDS-PAGE and Coomassie blue staining |
| Stability | Stable for 3 months from receipt of products under proper storage and handling conditions. |
| Storage | Store at -80 centigrade. Avoid repeated freeze-thaw cycles. |

 Tel: 1-631-559-9269 1-516-512-3133

 Email: info@creative-biomart.com  Fax: 1-631-938-8127

 45-1 Ramsey Road, Shirley, NY 11967, USA

Concentration 50 µg/mL as determined by BCA

Storage Buffer 100 mM glycine, 25 mM Tris-HCl, pH 7.3.

GENE INFORMATION

Gene Name IFI35 interferon-induced protein 35 [Homo sapiens (human)]

Official Symbol IFI35

Synonyms IFI35; interferon-induced protein 35; interferon-induced 35 kDa protein; IFP35; IFP 35; ifi-35; FLJ21753;

Gene ID 3430

mRNA Refseq NM_005533

Protein Refseq NP_005524

MIM 600735

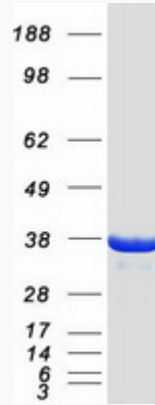
UniProt ID P80217

 Tel: 1-631-559-9269 1-516-512-3133

 Email: info@creative-biomart.com  Fax: 1-631-938-8127

 45-1 Ramsey Road, Shirley, NY 11967, USA

SDS-PAGE



 Tel: 1-631-559-9269 1-516-512-3133

 Email: info@creative-biomart.com  Fax: 1-631-938-8127

 45-1 Ramsey Road, Shirley, NY 11967, USA