

Recombinant Human IFI6 Protein (24-130 aa), His-tagged

Cat. No. IFI6-1422H Lot. No. (See product label)

SPECIFICATION

Product Overview	Recombinant Human IFI6 Protein (24-130 aa) is produced by Yeast expression system. This protein is fused with a 6xHis tag at the N-terminal. Research Area: Metabolism. Protein Description: Full Length of Mature Protein.
Species	Human
Source	Yeast
ProteinLength	24-130 aa
Form	Tris-based buffer,50% glycerol
Molecular Mass	12.4 kDa
AA Sequence	GKKKCSSESDSGSGFWKALTFMAVGGGLAVAGLPALGFTGAGIAANSVAASLMSW SAILNNGGGVPAGGLVATLQSLGAGGSSVVIGNIGALMGYATHKYLDSEEDDEE
Purity	> 90% as determined by SDS-PAGE.
Notes	Repeated freezing and thawing is not recommended. Store working aliquots at 4 centigrade for up to one week.
Storage	The shelf life is related to many factors, storage state, buffer ingredients, storage temperature and the stability of the protein itself. Generally, the shelf life of liquid form is 6 months at -20 centigrade/-80 centigrade. The shelf life of lyophilized form is 12

 Tel: 1-631-559-9269 1-516-512-3133

 Email: info@creative-biomart.com  Fax: 1-631-938-8127

 45-1 Ramsey Road, Shirley, NY 11967, USA

months at -20 centigrade/-80 centigrade.

Concentration A hardcopy of COA with reconstitution instruction is sent along with the products.

GENE INFORMATION

Gene Name IFI6 interferon, alpha-inducible protein 6 [Homo sapiens]

Official Symbol IFI6

Synonyms IFI6; FAM14C; IFI 6 16; IFI616; 6-16; G1P3; IFI-6-16;

Gene ID 2537

mRNA Refseq NM_002038

Protein Refseq NP_002029

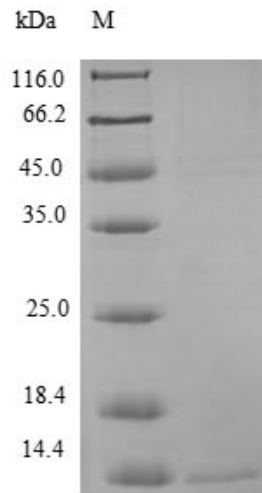
MIM 147572

UniProt ID P09912

 Tel: 1-631-559-9269 1-516-512-3133

 Email: info@creative-biomart.com  Fax: 1-631-938-8127

 45-1 Ramsey Road, Shirley, NY 11967, USA



(Tris-Glycine gel) Discontinuous SDS-PAGE (reduced) with 5% enrichment gel and 15% separation gel.

 Tel: 1-631-559-9269 1-516-512-3133

 Email: info@creative-biomart.com  Fax: 1-631-938-8127

 45-1 Ramsey Road, Shirley, NY 11967, USA