

## Recombinant Human IFI6 Protein (24-130 aa), His-B2M-tagged

Cat. No. IFI6-2182H Lot. No. (See product label)

### SPECIFICATION

<b>Product Overview</b>	Recombinant Human IFI6 Protein (24-130 aa) is produced by E. coli expression system. This protein is fused with a 6xHis-B2M tag at the N-terminal. Research Area: Cell Biology. Protein Description: Full Length of Mature Protein.
<b>Species</b>	Human
<b>Source</b>	E.coli
<b>ProteinLength</b>	24-130 aa
<b>Form</b>	Tris-based buffer,50% glycerol
<b>Molecular Mass</b>	24.4 kDa
<b>AA Sequence</b>	GKKKCSSESDSGSGFWKALTFMAVGGGLAVAGLPALGFTGAGIAANSVAASLMSW SAILNNGGGVPAGGLVATLQSLGAGGSSVVIGNIGALMGYATHKYLDSEEDDEE
<b>Purity</b>	> 90% as determined by SDS-PAGE.
<b>Notes</b>	Repeated freezing and thawing is not recommended. Store working aliquots at 4 centigrade for up to one week.
<b>Storage</b>	The shelf life is related to many factors, storage state, buffer ingredients, storage temperature and the stability of the protein itself. Generally, the shelf life of liquid form is 6 months at -20 centigrade/-80 centigrade. The shelf life of lyophilized form is 12

 Tel: 1-631-559-9269 1-516-512-3133

 Email: [info@creative-biomart.com](mailto:info@creative-biomart.com)  Fax: 1-631-938-8127

 45-1 Ramsey Road, Shirley, NY 11967, USA

months at -20 centigrade/-80 centigrade.

**Concentration**

A hardcopy of COA will be sent along with the products. Please refer to it for detailed information.

**GENE INFORMATION**

**Gene Name** IFI6 interferon alpha inducible protein 6 [ Homo sapiens (human) ]

**Official Symbol** IFI6

**Synonyms** 6-16; G1P3; FAM14C; IFI616; IFI-6-16;

**Gene ID** 2537

**mRNA Refseq** NM\_002038

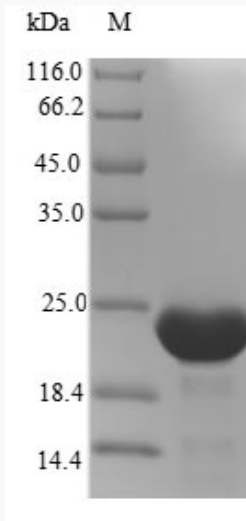
**Protein Refseq** NP\_002029

**UniProt ID** P09912

 Tel: 1-631-559-9269 1-516-512-3133

 Email: [info@creative-biomart.com](mailto:info@creative-biomart.com)  Fax: 1-631-938-8127

 45-1 Ramsey Road, Shirley, NY 11967, USA



(Tris-Glycine gel) Discontinuous SDS-PAGE (reduced) with 5% enrichment gel and 15% separation gel.

 Tel: 1-631-559-9269 1-516-512-3133

 Email: [info@creative-biomart.com](mailto:info@creative-biomart.com)  Fax: 1-631-938-8127

 45-1 Ramsey Road, Shirley, NY 11967, USA