

## Recombinant Human IFI6 Protein, GST-tagged

Cat. No. IFI6-4608H Lot. No. (See product label)

### SPECIFICATION

<b>Product Overview</b>	Human G1P3 full-length ORF ( AAH11601, 1 a.a. - 130 a.a.) recombinant protein with GST-tag at N-terminal.
<b>Species</b>	Human
<b>Source</b>	Wheat Germ
<b>Description</b>	<p>This gene was first identified as one of the many genes induced by interferon. The encoded protein may play a critical role in the regulation of apoptosis. A minisatellite that consists of 26 repeats of a 12 nucleotide repeating element resembling the mammalian splice donor consensus sequence begins near the end of the second exon. Alternatively spliced transcript variants that encode different isoforms by using the two downstream repeat units as splice donor sites have been described.</p> <p>[provided by RefSeq]</p>
<b>Molecular Mass</b>	40.04 kDa
<b>AA Sequence</b>	<p>MRQKAVSLFLCYLLLF TCSGVEAGKKKCSSESSDSGSGFWKALTFMAVGGGLAVAGL  PALGFTGAGIAANSVAASLMSWSAILNGGGVVPAGGLVATLQSLGAGGSCVVIGNIGA  LMGYATHKYLDSEEDDEE</p>
<b>Applications</b>	<p>Enzyme-linked Immunoabsorbent Assay  Western Blot (Recombinant protein)  Antibody Production  Protein Array</p>

 Tel: 1-631-559-9269 1-516-512-3133

 Email: [info@creative-biomart.com](mailto:info@creative-biomart.com)  Fax: 1-631-938-8127

 45-1 Ramsey Road, Shirley, NY 11967, USA

<b>Notes</b>	Best use within three months from the date of receipt of this protein.
<b>Storage</b>	Store at -80 centigrade. Aliquot to avoid repeated freezing and thawing.
<b>Storage Buffer</b>	50 mM Tris-HCl, 10 mM reduced Glutathione, pH=8.0 in the elution buffer.

## GENE INFORMATION

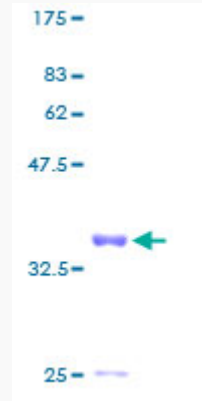
<b>Gene Name</b>	IFI6 interferon, alpha-inducible protein 6 [ Homo sapiens ]
<b>Official Symbol</b>	IFI6
<b>Synonyms</b>	IFI6; interferon, alpha-inducible protein 6; G1P3, interferon, alpha inducible protein (clone IFI 6 16); interferon alpha-inducible protein 6; 6 16; FAM14C; IFI 6 16; IFI616; interferon-induced protein 6-16; interferon, alpha-inducible protein clone IFI-6-16; 6-16; G1P3; IFI-6-16;
<b>Gene ID</b>	2537
<b>mRNA Refseq</b>	NM_002038
<b>Protein Refseq</b>	NP_002029
<b>MIM</b>	147572
<b>UniProt ID</b>	P09912

 Tel: 1-631-559-9269 1-516-512-3133

 Email: [info@creative-biomart.com](mailto:info@creative-biomart.com)  Fax: 1-631-938-8127

 45-1 Ramsey Road, Shirley, NY 11967, USA

**Quality Control  
Testing**



12.5% SDS-PAGE Stained with Coomassie Blue.

 Tel: 1-631-559-9269 1-516-512-3133

 Email: [info@creative-biomart.com](mailto:info@creative-biomart.com)  Fax: 1-631-938-8127

 45-1 Ramsey Road, Shirley, NY 11967, USA